

Apr
2013

The BELLOWS

Many ways to earn well deserved recognition in our club

Winners Abound In EPS Activities

Congratulations go to **Norm Cholewinski**, EPS Photographer of the Year, and a host of additional EPSers (see complete list on next page) who were honored for their competition efforts in 2012 at our annual banquet on March 2.



Photo - Gene Cleveland

Winning image for WRC catalog cover.

Congratulations also go to **Gene Cleveland** for the shot of his granddaughter taken while volunteering to shoot fun activities in parks managed by our club facility host, the Willamalane Park and Recreation District. His shot has been chosen to be the cover photo for their next events catalog.



Photo - Tom Elder

EPS "Top Gun" for 2012.

These are just two of the many ways our club provides opportunities for our members to be recognized for creating outstanding work.

continues on next page

Inside This Issue

- Complete list of 2012 EPS winners 2
- Tim Grey, Q&A, *Workflow*, *Pano File Size* 3
- *Fast camera "sees" magnetism working* 4
- New Theme & Judge for "Fun Night" 5
- One more upscale frame/4Cs 2013 6
- Floating categories/Calendar theme 7
- Stolen from Internet "You Tell Us" 8



Winners *continued*

There are thirty-seven standing EPS awards (side bar) presented at the end of each year to the folks whose work is judged to be the best after entering head to head monthly competitions with digital and print images.

Additionally, each month EPS enters a digital competition sponsored by the Columbia Council of Camera Clubs (4Cs) our connection to thirty other camera clubs in Oregon, Washington, Idaho and one club in California. This competition is open to all members including those not entering our club's in-house digital competition.

Also each year fourteen theme-related images are chosen for our club calendar project (p7) produced in cooperation with TechnaPrint printing in Eugene. Our club annual Fun Night (p5) provides three more opportunities for folks to go home with prizes again for images judged to be the best for that event.

So, there are many ways to have fun in EPS with your camera as you explore new ideas and techniques for creating outstanding images you might not have thought possible the evening you decided to join our photo club.

Congratulations to all who received awards and to many other winners who learned something at EPS during the year that you now know makes you a better photographer.

Bruce Bittle



EPS, VP, David Putzier (standing ct.) calls winning numbers during the raffle.

Winners for 2012

Photographers of Year (combined monthly Digital & Print scores)

Top Gun, Norm Cholewinski, 1,364 total points

Best New Gun, Rick Lurie, (1,096); **Nature, PoY, Bob Petit** (918); **Pictorial, PoY, Buzz Summers**, (726); **Ab/Ex, PoY, Norm Cholewinski**, (434); **Floating, PoY, Buzz Summers**, (485).

Digital Photographers of Year

Digital PoY Norm Cholewinski, 709 points

Digital PoY by category: **Floating-Stephanie Ames**; **Ab/Ex-Norm Cholewinski**; **People-Buzz Summers**; **Pictorial-Walt Biddle**; **Nature-Bob Petit**.

Print Photographers of Year

Print PoY, Norm Cholewinski, 655 points

Print PoY by category: **Floating-Buzz Summers**; **Ab/Ex-David Becker**; **People-Buzz Summers**; **Pictorial-Walt Biddle**; **Nature-Bob Petit**

Digital Images of Year

Best digital image, "Foresters Tern" by Jeff Green;

Nature, IoY, "Foresters Tern" by Jeff Green; **Pictorial, IoY, "Summer Rose" by Norm Cholewinski**; **People, IoY, "The Outlaw" by Jerry Gowins**; **Ab/Ex, IoY, "Death Valley" by Rick LeBrun**; **Floating, IoY, "Cross & Clouds" by Jerry Gowins**
Judges Choice Awards, "Ohh Jacob" by Norm Cholewinski; **"Death Valley" by Rick LeBrun**; **"Kodak No.1 & Film" by Mike Van De Walker**

Print Images of the Year

Print Image of the Year, "Physalis Alkekengi" by Norm Cholewinski

Nature, IoY, "Osprey Hovering" by Bob Petit; **Pictorial, IoY, "Father & Son" by Norm Cholewinski**; **People, IoY, "Girl in Denim" by Keith Munson**; **Ab/Ex, IoY, "Ribbon Candy" by Norm Cholewinski**; **Floating, IoY, "Dropped Camera" by David Becker**
Judges Choice Awards, "Orchard & Stream in Snow" by Walt Biddle; **"Stroke" by Kevin Caldwell**; **"59 Eldorado" by Norm Cholewinski**

President's Awards (for special club work)

Kurt Pratt, Kathy Baker, Mike Van De Walker, Bruce Bittle





Q&A With Tim Grey

Q: *My workflow is about 80% Lightroom-only. I open images in Photoshop if I need to use layers, assemble panoramas or other features that Lightroom does not do well. Once done with an image and save as a .psd, it appears in Lightroom next to the original image. What next? Can I make [further] adjustments in Lightroom then re-open in Photoshop?*

A: This is a very important issue. You can't mix and match smoothly between Photoshop and Lightroom, because the two applications use different adjustment options. This makes a less-than-ideal workflow, but if you're aware of the issues you can work around them.

Lightroom isn't able to read the information contained in Photoshop layers.

You have two options. [Make no] adjustments in the Lightroom Develop module [after creating] those Photoshop layers to preserve the layers so the image can be re-fined later.

Or choose to not worry about the layers [then] apply any [further] adjustments you want in Lightroom.

Once you've edited a photo in Photoshop via Lightroom, you should work on the image only in Photoshop unless you're willing to

lose the layers.

My recommended workflow is to [do final] editing in Photoshop, then save and close it when finished so it will be included in the Lightroom catalog as a separate image. From that point forward if changes [are needed], I send it back to Photoshop, using Edit In then choosing Edit Original option. I [never] apply any [after the fact] Lightroom adjustments on a layer-based image.

It is possible to apply adjustments in Lightroom after you've adjusted an image in Photoshop, [[but only if you're willing to lose the layers] for that image.

Tim Grey is one of the top educators in digital photography and imaging, offering clear guidance on complex subjects.

Tim has written more than a dozen books on digital imaging for photographers. He has also had hundreds of articles published in magazines and is a member of the Photoshop World Dream Team of Instructors.

[Ed Note: These articles are being reprinted with permission.]

Q: *Do you have any recommendations for reducing panorama file size (when shot RAW) without significant quality loss?*

A: Select all of the images and double-click one of them to open all images in Adobe Camera Raw. Click Select All (top-left of the dialog) and apply adjustments to the active image. Optimize all of the images (with the same basic adjustments) click Done to preserve them without actually opening the RAW captures.

Then [stitch] the composite panorama in Photoshop and you'll [then] have a large 16-bit per channel composite. There is no benefit keeping it in 16-bit mode. Choose Image > Mode > 8 Bits/Channel to convert. This cuts the file size in half, [with] no impact on quality.

Reducing [image size] cuts file size even more. Choose Image > Image Size, turn off Resample Image checkbox, set Resolution to 300 pixels per inch that [changes default print] size. If that size is larger than you'll ever print, turn on Resample Image and enter a more appropriate [print size] in the Document Size [boxes] then click OK.

Saving the image as a Photoshop PSD ensures minimum file size without reduction in quality.





New Two-In-One Photo Equipment Cart

Sooner or later photographers who acquire equipment for all types of shooting realize they have a heavy load to lug around. There are many versions of wheeled bags available, but most are designed for negotiating airports and other smooth hard surfaces.

Clik company has produced the all-terrain cart for photographers who are not afraid of rough country but at the same time prefer not to put everything on their back.

Along with easier rolling large wheels this rig also provides a stable, elevated platform for shooting over crowds, fences or vehicles. One could say this is a mini version of the Pontiac station wagon with roof mounted platform used by Ansel Adams in the often seen image with him on top behind his huge view camera in Yosemite.

The price of this rolling view-
ing stand is not cheap at \$999, however it certainly appears serviceable.



Thanks to Graham Smith



New Research Camera Sees Nano-magnetism Working

Science Daily Mar. 18, 2013

— Using a new type of camera that makes extremely fast snapshots with an extremely high resolution, it is now possible to observe the behavior of magnetic materials at the nanoscale.

Research was carried out at Radboud University Nijmegen, Stanford, Berlin and Tokyo. [Using] a unique X-ray laser at SLAC National Accelerator Laboratory, essentially an X-ray laser, is like a camera with both an extremely high shutter speed of 100 femto-

seconds (one tenth of a trillionth of a second) and an extremely high resolution of a few nanometers (one billionth of a meter).

The measurements show that the magnetic material behaves completely different at the nanoscale than at the macroscale.

These results will make it possible to develop ultrafast nanomagnets in the future optimized through nanostructuring. This will open up pathways for even smaller and faster computer magnetic data storage.



New Mats Available

New 16 x 20 inch outside dimension double white mats are now available with a center-cut opening for images at 12 x 16 inches rather than the regular opening of 10 x 15 inches. The regular 10 x 15 mats will still be in stock.

The price for both sizes remains at \$6 each for either size opening. The price for frames remains the same at \$15 each.

Order from Bittle by phone (541.343.2386) or email <bittled70@gmail.com>



An EPS
Preferred
Vendor

U of O Bookstore Art Department

Corner of 13th Ave. & Alder St.
20% discount on all art supplies



2013 EPS Fun Night Theme Announced

“Fun Night” November 26, 2013

This year’s theme

“Make ‘Em Laugh”

**Prizes will be awarded
to the three images
that elicit the loudest laughs
when recorded on the spot by a
professional decibel meter.**

Poke fun at anything (or anybody!)

Staged images or candid.

Digital images only (1080 pixels on long side).

**Bring your images on a thumb drive
to make downloading easy.**

Snacks and drinks will be provided.



Special \$30 Upscale Frame Almost Gone

SORRY, SOLD OUT

WELL... NOT QUITE SOLD OUT!
HOLD EVERYTHING!
TOM FOUND ANOTHER ONE!
OPENING MEASURES 17 3/4"X15 3/4"
Call - 541-343-2386



**2013 Convention
Columbia Council of
Camera Clubs**

**Hold the
dates!**

Hood River, OR
October 11th, 12th & 13th

Hosted by:

Gorge Photography Club
Located at the Hood River Inn

www.gorgephotography.com

The gorge-ous Gorge is waiting for you!

An EPS
Preferred
Vendor

Evergreen Film Service

1412 West 7th Avenue

15% Discount on all in-house services (including slide processing)



EPS 2013 Floating Categories

January - February
Long Exposures

March - April
Yin and Yang

May - June
Simplicity

July - August
*(Summer Break
No meetings)*

September - October
**Business / Store Front
with Window Display**

November - December
Macro / Close-ups

2014 Calendar Theme - “Let There Be Light”

I'm not particularly interested in artificial light like city-scapes. However, sunsets, sunrises, sun breaking through the clouds...that

type of thing is all fair game. In short, “natural” light or a combination with heavy emphasis on the natural as opposed to artificial. If

we used this theme for 2013 we could have a re-run of the 2011 calendar on our hands. So, for the light theme, see the images below.

Thanks, Eric Pearson

Not Like These



More Like These



“Perfect Vacation Locations”

New theme for the 2015 calendar

Get a head start on this one with twenty months advanced notice. Same vertical format with center of interest in the top half of the image. Any of your favorite vacation spots for a winter or summer get-away will be the theme of fourteen images for this calendar.

*An EPS
Preferred
Vendor*

Focal Point Camera Store

161 West Ellendale, Dallas, OR

Your camera's home away from home.

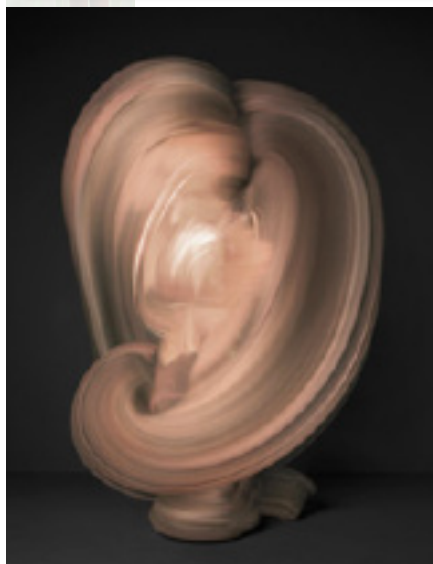
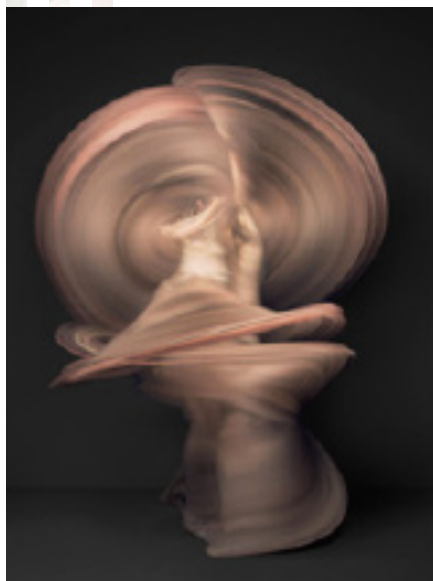
Generous discounts on most items

Call Mike Lowery, 503.623.6300



Stolen From The Internet

Long Exposures, But Can You Tell Us How They Were Made?



CLUE:

Thanks to EPSer **Lorin Edmonds** for finding these images.





What To Know

April 2013

- 2 Print competition night
- 9 Ed. Night, **Studio photos, Tom Bruno**
Meeting will be held in studio at 1st & ???
- 16 Digital competition night
- 23 Social Night - Q & A, demo night

May 2013

- 7 Print competition night
- 14 Ed. Night, **TBA**
- 21 Digital competition night
- 28 Social Night - Q & A, demo night

June 2013

- 4 Print competition night
- 11 Ed. Night, **TBA**
- 18 Digital competition night
- 25 Social Night - Q & A, demo night

**July & August
Summer Break
No Meetings – Happy Shooting**

September 2013

- 3 Print competition night &
2014 Calendar Judging night
- 10 Ed. Night, **TBA**
- 17 Digital competition night
- 24 Social Night - Q & A, demo night

October 2013

- 1 Print competition night
- 8 Ed. Night, **TBA**
- 15 Digital competition night
- 22 Social Night - Q & A, demo night

When To Show

• **David Putzier has a solo** show of, “*Random Favs*” at Dot Dot-sons that can be seen until the middle of the month. **Also:** Several of his images are on display in the David Joyce Gallery at LCC.

• **Keith Munson has a show** in Harris Hall Lobby of the Lane Co. Courthouse that can be seen until the end of April. **Hours 8-5, 125 East 8th Avenue.**

• **Cottage Grove, Show**
Don Lown's coordinated EPS “all comers” show at the **Cottage Grove Community Center**, is still viewable at 700 East Gibbs Avenue for another week.

• **The Bruce Bittle, Tom Elder & Keith Munson show –**
“*A Small Look at a LARGE Harvest*” has been invited to a private, one-night, invitation-only showing at the Linn County Expo Center in Albany. The show will be part of an annual dinner promoted by the Oregon Women for Agriculture, **Saturday evening the 20th.**

• **COMING in June**
EPS all members show
The Harris Hall Lobby at the Lane County Courthouse in June. Theme, “*Stunning Landscapes.*” Show goes up Mon. 3rd, comes down Fri. 28th. **Images must be in “old club standard” (blk frames, dbl wht. mats).**

• **Do you have a show?**
Contact: <bittled70@gmail.com>

Classifieds

**Classified Ads
Free to all
EPS members**

*This
Space
Available*

EPS buys local mats & frames in bulk

MATS 16x20 double whites, acid-free with stiff backers. White core, \$6 - Choice of center cut openings 10"x15" or NEW 12"x16" openings for horiz. or vert. prints. Black core mats with 10" x 15" openings \$14 ea.

FRAMES 16x20 Neilson quality aluminum Black or Silver with hardware & glass, \$15 each. Two dollars from each mat & frame purchase are donated to EPS.

**Contact:
Bruce Bittle 343-2386**

Legal Stuff

The Bellows is published monthly by the Emerald Photographic Society, a not-for-profit organization, and is completely supported by EPS funds. All materials within do not necessarily reflect the views of the EPS Board of Directors, officers, membership, supporting vendors or editor of this publication. All brand and product names listed are trademarked

and/or registered and are not necessarily endorsed by EPS. EPS does endorse vendors offering our members discounts listed on the last page of each issue.

Reprinting articles from The Bellows for non-commercial use is permitted as long as the photo or article is not copyrighted and source credit is given to the author and this newsletter.

Any other type of reproduction requires specific written permission.

Inquiries about, or submissions for The Bellows (article deadline — 3rd Tues. for following month publication) may be directed to the editor, c/o Emerald Photographic Society, 1236 Debrick Rd., Eugene, OR 97401, or by email <bittled70@gmail.com>





EPS Preferred Vendors



Show your membership card to these vendors for nice discounts.
Be a good ambassador for EPS each time you receive these discounts
by letting these folks know how much you appreciate their support.



Dotson's Camera Store

1668 South Willamette Street

15% Discounts on in-house processing (including slide processing)

Evergreen Film Service

1412 West 7th Avenue

15% Discount on all in-house services (including slide processing)

*Your camera's home
away from home*

Focal Point Photography

161 West Ellendale, Dallas, OR

Generous discounts on most items

Call Mike Lowery, 503.623.6300

Oregon Gallery

199 East Fifth Avenue, Eugene

15% discount on all matting and framing



Derek Dickerson, Computer Technician

Discounts on house-calls & on-phone computer help

PCs & Macs, Hardware, Upgrades, Networks

888-458-5650 Cell: 541-335-9912 or www.teQmo.com

U of O Bookstore Art Department

Corner of 13th Ave. & Alder St.

20% discount on all art supplies

Vistra Gallery

160 East Broadway, Eugene

20% discount on all printing, matting and framing

Up to 30% discount on all orders over \$500