

Mar
2015

The BELLOWS

Petit, Norris, Gowins, VanDeWalker, LeBrun, Reynolds, Green, & Munson Win Categories

Biddle, Putzier EPS 2014 Top Guns

Once each year we recognize the members of our club who worked the hardest to increase the quality of their photos by rewarding them for their year-long efforts.

Total monthly competition scores show that **Walt Biddle** is the Photographer of the Year and **David Putzier** won Photo of the Year, so they are now the EPS Top Guns for 2014. Eight other members also received recognition for the highest scores or with winning images in each of our five major competition categories for the year.

Winners with the highest points in each of five monthly competition categories were:

Bob Petit – *Nature*, **Betsy Norris** – Pictorial, **Jerry Gowins** – *People*, **Mike VanDe Walker** – *Abstract/Experimental* and **Walt Biddle** – *Prints*.

Winning with the Best Photos of the year in all five categories were: **Rick LeBrun** – *Nature*, **Gina Reynolds** – Pictorial, **Jeff Green** – *People*, **David Putzier** – *Abstract/Experimental* and **Keith Munson** – *Prints*.

The winning images for this group were selected by three judges chosen from outside our club to avoid possible conflicts of interest. The three judges this year were John Meyers – a local commercial photographer, Mike Lowery – photographer from Dallas, OR and Deb Ingebretsen – Photography Coordinator for the Emerald Art Center in Springfield.

continues on next page

EPS Best Shooters of the Year



Photo - Tom Elder

EPS Photo of the Year



*"One With Nature" by David Putzier
Also, Abstract/Experimental Photo of the Year*

Inside This Issue

• Banquet continued	2
• 2014 Year End Final Standings	3
• Perfect Photographers Vehicle Discovered	4
• Software Program Knows Emotions of Photos	5
• Emerald Art Museum – Workshops	6
• Ask Tim Grey - Monitor Brightness – LiveView Heat	7
• Stolen / Internet - Gravity Glues Rocks	9
• What To Know - Where To Go	10



Awards *continued*

Two other awards deserve note as well. The Nyquist Award for the Best New Photographer (based on competition points) went to **Okke Duursma**, a U of O student from the Netherlands. And the President's award for the member contributing to the club above and beyond all expectations during the year went to Jann Gale our Hospitality person.

Congratulations to all! Complete list of winners on next page.

Bruce Bittle

People Photo of the Year



"Woman on DeFazio Bridge"
by **Jeff Green**

Judges Choice Award



"Cherry Blossoms" by **Gina Reynolds**

Print Photo of the Year



"Palouse Sunrise" by **Keith Munson** -
Also, Runner-Up, Photo of the Year

Nature Photo of the Year



"Storm a Coming" by **Rick LeBrun**

Judges Choice Award



"Winter Walk" by **David Putzier**

Judges Choice Award



"Winter Fog" by **Erin Wood**

Pictorial Photo of the Year



"Dragon Fly" by **Gina Reynolds** -
Also, Honorable Mention, Photo of the Year

FIELD TRIP POSSIBILITIES

MARCH

Klamath Wild Wings (ON)*
Thompson Mill (DT)
Eugene Car Show (L)

APRIL

Finley Wildlife Refuge (DT)
Summer Lake (DT)
Wooden Shoe Tulips (DT)

MAY

Mt. Hood Pear Festival (ON)
Schriner Iris Gardens (DT)
East WA Palouse Area (ON)
Montana Game Farm (FULL)

JUNE

Columbia Gorge (DT)
Guided Valley Tour (DT)
U of O Walk Around (L)
Woodburn Drags 27th - 28th (DT)

JULY

Civil War Reenactment, 4th (DT)
Fireworks, 4th (DT)
Shaniko (DT)

AUGUST

Covered Bridges (L)
Madras Air Show, 28-29 (ON)
Downtown Walk Around (L)

SEPTEMBER

Elkton (DT)
Clear Lake (ON)

OCTOBER

4Cs Convention, 9-10 Walla Walla (ON)
Black Butte Aspens (DT)

NOVEMBER

Oakland Cemetery (DT)
Century Farm Seed Mill (DT)

DECEMBER

ShoreAcres (ON)
Lighthouses (DT)

JANUARY

Coast Aquarium (DT)
Newport Waterfront (DT)
Antique Machine Shop (L)

FEBRUARY

Asian Festival (L)
Carousel Museum (DT)
Brooks Truck Museum (DT)

* L = Local DT = Day Trip ON = Overnight



COMPLETE 2014 YEAR END STANDINGS

PHOTOGRAPHERS of the YEAR

Walt Biddle 498

Runner Up

Jerry Gowins 490

Honorable Mention

Stephanie Ames 462

NATURE CATEGORY

Winner

Bob Petit 384

Runner Up

Rick LeBrun 291

Honorable Mention

Jann Gail 246

PICTORIAL CATEGORY

Winner

Betsy Norris 458

Runner Up

Dave Horton 234

Honorable Mention

Norm Cholewinski 178

PEOPLE CATEGORY

Winner

Jerry Goins 439

Runner Up

Buzz Summers 386

Honorable Mention

Bill Haynes 206

ABSTRACT/EXPERIMENTAL CATEGORY

Winner

Mike VanDeWalker 230

Runner Up

Norm Cholewinski 170

Honorable Mention

David Putzier 100

PRINT CATEGORY

Winner

Walt Biddle 489

Runner Up

Keith Munson 119

Honorable Mention

Bill Walker 94

PHOTOS of the YEAR

"One With Nature"

David Putzier

Runner Up

"Palouse Sunrise"

Keith Munson

Honorable Mention

"Dragon Fly"

Gina Reynolds

CATEGORY PHOTOS OF YEAR

NATURE CATEGORY

Winner

"Storm a Coming"

Rick LeBrun

Runner Up

"Morning Light"

Stephanie Ames

Honorable Mention

"Still Standing"

Jo Eldridge

PICTORIAL CATEGORY

Winner

"Dragon Fly"

Gina Reynolds

Runner Up

"Winter Walk"

David Putzier

Honorable Mention

"Floating Maple Leaf"

Betsy Norris

PEOPLE CATEGORY

Winner

"Woman on DeFazio Bridge"

Jeff Green

Runner Up

"Schahrzad"

Kammi Lennox

Honorable Mention

"Roman Beggar"

Jerry Gowins

PHOTOS of the YEAR continued

ABSTRACT-EXPERIMENTAL CATEGORY

Winner

"One With Nature"

David Putzier

Runner Up

"The Pods"

Mike VanDeWalker

Honorable Mention

"Crayon Blobs"

Mike VanDeWalker

PRINT CATEGORY

Winner

"Palouse Sunrise"

Keith Munson

Runner Up

"Sawwhet Owl"

Walt Biddle

Honorable Mention

"Red Foxes Fighting"

Walt Biddle

JUDGES CHOICE AWARDS

"Winter Fog"

Erin Wood

"Winter Walk"

David Putzier

"Cherry Blossoms"

Gina Reynolds

NYQUIST AWARD

Best New Photographer

Okke Duursma

PRESIDENT'S AWARD

For Outstanding Service

Jann Gail

CONGRATULATIONS

To all for making 2014
a very good year!



An EPS
Preferred
Vendor

EPS Newest Preferred Vendor
Shutterbug Camera Stores

Coburg Road – Valley River Center

10% discount on most camera accessories and photo finishing



Perfect Photo Vehicle Found At Car Show

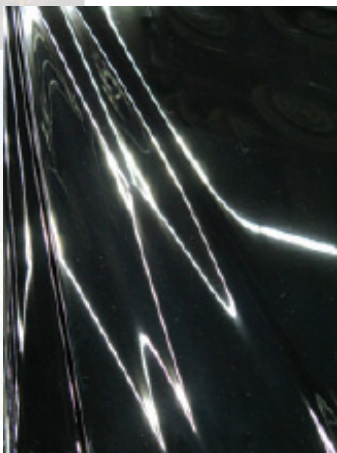
How many times have we discussed what would be the perfect photo vehicle to drive if money was no problem? Ansel Adams had a 1949 Pontiac station wagon with a homemade platform built on top complete with ladder to get himself and his huge big format camera up there.

The vehicle at the right was instantly seen by three EPSers at the Portland Car Show as the answer to Ansel's dream of excellent equipment security, elevation to shoot over fences and go virtually anywhere. Who knows, maybe a accessory model to pose when necessary?



Photography still sets the stage by setting appropriate backgrounds for some car manufacturers.

These two examples measured about 50 to 60 feet long by 15 feet tall. Both were very nicely designed and finished.



Always lots of auto art.





Computer Looks At Photos, Knows Emotions

Much of the content shared on the internet is in the form of images that can convey a lot more than a text sentence might and will often provoke more emotions in a viewer.

Researchers at the University of Rochester in collaboration with Adobe Research has come up with a way to digest data in the form of images. They've created an image classification computer program they call a sentiment analysis engine that they describe as a progressively trained deep convolutional neural network.

In other words a trained computer can now be used to determine what sentiments images are likely to elicit and could be useful for things as diverse as measuring economic indicators or predicting elections.

For example, during a political campaign voters will often share their views through pictures. Two pictures might show the same candidate, but can make very different political statements.

A human would recognize one as being a positive and another one being negative. But no human can look at every picture shared on

social media -- it is truly "big data." Think of all the millions of images on Twitter and Flickr for example.

To make informed image classification guesses computers can be trained to digest this data and this approach can do it far more accurately than was possible before now.

One surprising finding is that the accuracy of image sentiment classification has exceeded that of the text sentiment classification on the same Twitter messages.

*Science Daily, Feb. 6, 2015
University of Rochester &
Adobe Research*



Awe Inspiring Photos Promote Good Health

Taking in such spine-tingling wonders as the Grand Canyon, Sistine Chapel ceiling [or Painted Hills?] may boost the body's immune system, according to new research.

It has been established that a healthy diet, lots of sleep, and exercise bolster the body's defenses against physical and mental illnesses. A new research finding at U.C. Berkeley, published in the journal *Emotion*, is one of the first to look at the role of positive emotions.

"Our findings demonstrate that positive emotions are associated with the markers of good health," said Jennifer Stellar, lead author of the study.

"That awe, wonder and beauty



"Painted Hills, Rain-Drenched Sunset"

promote healthier lower levels of cytokines suggests that these positive emotions have a direct influence upon health and life expectancy," said psychologist Dacher Keltner, a co-author of the study.

Two separate experiments, with over 200 young adults who looked at selected images, showed that those who experienced more positive responses; especially awe, wonder and amazement, had the

lowest levels of the cytokine, Interleukin 6, a marker of good health.

High levels of cytokines are associated with poorer health such as type-2 diabetes, heart disease, arthritis and even Alzheimer's.

"Awe is associated with curiosity and a desire to explore, the opposite of those found where individuals typically withdraw from others," Stellar said.

Science Daily, Feb. 2, 2015



Ed Night Light Painting Demo, Well Done

Ben Carlson was well prepared with props, model, (David Becker), all of the right equipment and a software post processing demo to show folks how to paint with light.

Ben started the evening with a series of previously completed "how-to" images from several local locations with hand-held LED light and camera shutter open, for a series of 30 second shots. He then did a shoot on the spot followed by post processing multiple shots in layers to show how to arrive at a finished image. Good job Ben. Thank you!



Emerald Art Center Workshops

The Bellows will keep EPSers advised of upcoming workshops that will be taking place at the Emerald Art Center in the next few months. These three are just the beginning of a series that will take place the next two months with others scheduled later in the year.

Questions should be directed to Deb Ingebretson at the EAC who is making all the arrangements for each workshop.

Fine Art Figure Photography - Low Light and High Contrast - Don Gustavson



Lee Petrusi and Lil-Grish Kone - Photographed by Don Gustavson

March 22, 2015
Noon - 4 pm

\$125 for members
\$150 for non-members

Studio Photography

All Levels

Fine Art Figure Photography - Two Dancers - Don Gustavson



Photograph by Don Gustavson

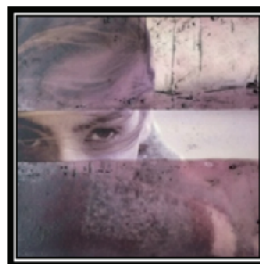
April 19, 2015
Noon - 4 pm

\$150 for members
\$175 for non-members

Studio Photography

All Levels

~ Contemporary Photo Encaustic ~ Clare O'Neill



Clare O'Neill

April 25-26, 2015
9:00 am - 4:00 pm daily

\$325* for members
\$375* for non-members
*Includes \$50 for supplies.

Studio Based

All Levels



Q&A With Tim Grey

ASK?
tim
grey

Q: *I read that just by bumping up monitor brightness 20%-30% is good enough to [allow prints to match the monitor. True]?*

A: Increasing brightness to correct a dark print is a last resort. I regard this approach as bad color management. Monitors should absolutely be calibrated in the first place before considering whether a print is too dark.

Make sure the monitor is accurate so the printer is producing an accurate print. When the print doesn't match the monitor the first thing to do is figure out why.

The first step then, is to calibrate and profile the monitor to get accurate information from all photos. Most [new, out-of-the-box] monitors have default settings about twice as bright as they should be. That is a full stop too bright. Calibrating the display provides compensation for this issue to ensure that any photo adjustments are appropriate.

Also, make sure to use good profiles for the printer and paper combination [along with] correct software settings in the printer properties dialog.

Bottom line, be sure that [total] color management, for [monitors, printers, ink, paper and soft-

ware] are correct. This will ensure predictable and consistent results when making prints or when sending photo [files] to someone else to be printed.

Q: *Does using Live View for close focusing for a long period cause damage to my camera? How long is a "long period"?*

A: Great question, no clear answer. To begin with, continuous use of the image sensor will lead to a rather significant (and quick) increase in heat, which leads to greater noise in images. It can also cause early shutter failure as it must remain open the entire time you are using Live View. This can stretch shutter assembly springs.

I love using Live View to improve a given photo, but I try to work quickly limiting the time I'm using it to minimize heat buildup.

It's worth developing good habits to limit the use of Live View.

Tim has written a dozen books, published hundreds of magazine articles and is a member of the Photoshop World Dream Team. [Ed Note: Articles are reprinted with permission & shortened to fit space.]

Q: *How do I go about a color calibration for my PC monitor? Is there a special site? Software? Procedures?*

A: I don't hear photographers talking about monitor calibration as much as I did just a few years ago. That's unfortunate, because even with the latest high-quality LCD displays, calibration is important to ensure an accurate and consistent presentation of images.

The basic process of calibrating your monitor is straightforward. The software will guide you through the various adjustments to make to the actual monitor controls. When that initial process is complete, a series of tonal and color values will be measured by the colorimeter, and a profile will be created based on those values.

That profile will then be set as the default display profile for your computer and from then on you can work confidently with a consistently accurate display. Then repeat the calibration process periodically although with current digital displays follow-up calibration doesn't need to be done all that often.

My recommendation for a great calibration product at a competitive price would be the Color-Munki Display from X-Rite.



4Cs Convention, Walla Walla, October 9-10

Darrell Gulin
Keynote
www.gulinphoto.com
CANON EXPLORES THE LIGHT
Canon

Blake Rudis
www.everydayhdr.com

rmssp
rocky mountain school of photography

Astrophotography
Kristen Hill

LR Making Lightroom Work for You
Art Burkhalter

Strange FX
Ken & Lydia Strange
www.strangefx.com

Silent Auction
Field Trips
Image Displays

aperture
www.aperture.org

COLUMBIA COUNCIL OF CAMERA CLUBS 4CS

2015 Photography Conference

(The Event No One Will Want to Miss)

October 9-11

Walla Walla Community College
500 Tausick Way Walla Walla, WA

Hosted by
Blue Mountain Photo Club

www.columbiacameraclubs.org <http://bluemountainphotoclub.org>

An EPS
Preferred
Vendor

The Oregon Gallery

199 East Fifth Avenue, Eugene

(Almost adjacent to the Steelhead Brewery)

15% discount on all matting and framing

Time to Re-Up Your EPS Membership

\$35 for Single membership (92¢ per meeting)

\$50 for Couples membership (65¢ per meeting)

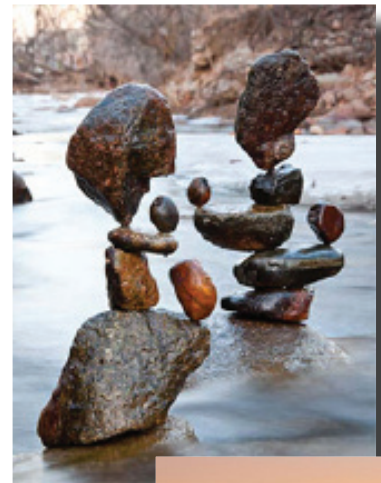
\$20 for Student membership (57¢ per meeting)

A bargain no matter how you slice it!

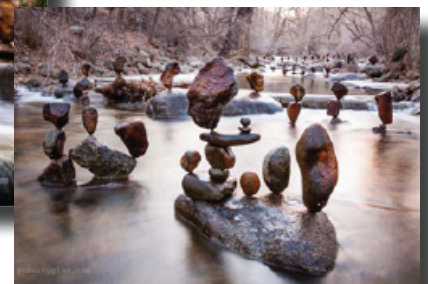
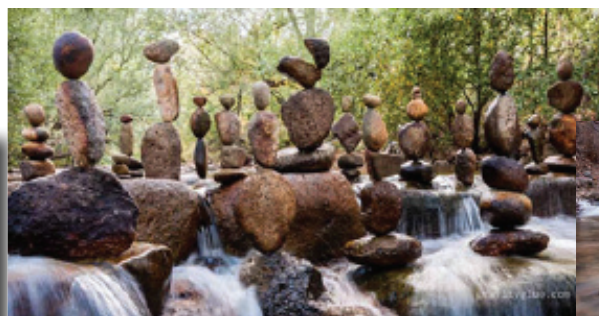
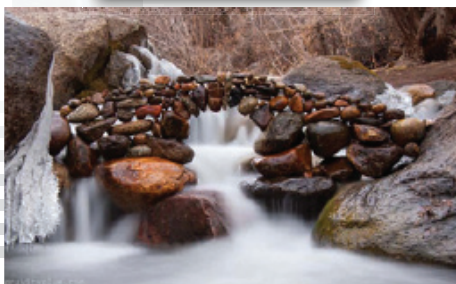
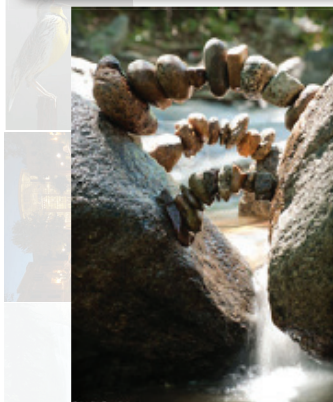
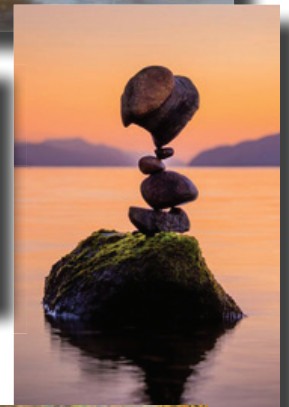


Stolen From The Internet

Michael Grab, Artist or Magician?



*Similar to the "nature" art of Andy Goldsworthy but how does this guy appear to defy gravity?
He calls his art Gravity Glue and still doesn't explain how it's done.*





What To Know

March 2015

- 3 Challenge Night - Theme **"HALF"**
- 10 Ed. Night, **TBA**
- 17 Print & Digital Competition night
- 24 Beginners Q & A – 4Cs pics judging

April 2015

- 7 Challenge Night - Theme TBA Mar. 3
- 14 Ed. Night, **TBA**
- 21 Print & Digital Competition night
- 28 Beginners Q & A – Demo night

May 2015

- 5 Challenge Night - Theme TBA April 7
- 12 Ed. Night, **TBA**
- 19 Print & Digital Competition night
- 26 Beginners Q & A – Demo night

June 2015

- 2 Challenge Night - Theme TBA May 7
- 9 Ed. Night, **TBA**
- 16 Print & Digital Competition night
- 23 Beginners Q & A – Demo night

**No Meetings
July & August**

September 2015

- 1 Challenge Night - Theme TBA May 7
- 8 Ed. Night, **TBA**
- 15 Print & Digital Competition night
- 22 Beginners Q & A – Demo night

October 2015

- 6 Challenge Night - Theme TBA May 7
- 13 Ed. Night, **TBA**
- 20 Print & Digital Competition night
- 27 Beginners Q & A – Demo night

Where We Show

• David Becker

Has an exhibit **"Paint and Pixels"** with painter Diane Lang, at Island Park Art Gallery located in the Willamalane Adult Activity Center at 215 W. C St. The show can be seen until March 26. A well attended reception was held Friday Feb. 13 and sales were good.

• Mary Harrsch

My entire ancient art archive has been accepted into New York University's Ancient Image Database (for non-commercial use).

Classified

**Classified Ads
Free to all
EPS members**

**This
Space
Available**

**Got a show?
We want to know**

Have a show going up?

*Send complete details
(location, time, theme, etc.)*

**Have your photos
been published?**

*Send complete details
(Publication, date, etc.)*

**Send before the last
week of the month to:**

<bittled70@gmail.com>

**EPS WHOLESALE
print show supplies**

\$6 MATS (16"x 20" OD).
Double whites, acid-free
surfaces with stiff backers.
*Center-cut with 10"x 15"
or 12"x 16" openings.*

\$14 WHITE MATS BLACK CORE
*Available only with 10"x 15"
center-cut opening.*

\$15 FRAMES (16"x 20" OD).
Black or Silver aluminum,
with hardware & glass.

\$5 TRANSPORT BOXES
for framed images.
(some assembly req.)

**\$2 from each mat, frame
or box purchase
goes to EPS.**

**Contact:
Bruce Bittle 541.343.2386**

Legal Stuff

The Bellows is published ten times per year by the Emerald Photographic Society, a not-for-profit organization, and is completely supported by EPS funds. All materials within do not necessarily reflect the views of the EPS Board of Directors, officers, membership, supporting vendors or editor of this publication. All brand and product names listed are trademarked and/

or registered and are not necessarily endorsed by EPS. However, EPS does endorse vendors offering our members discounts listed on the last page (randomly on other pages) of each issue.

Reprinting articles from *The Bellows* for non-commercial use is permitted as long as the photo or article is not copyrighted and source credit is given to the author and this newsletter. Any other

type of reproduction requires specific written permission from the editor.

Inquiries about, or submissions for *The Bellows* (deadline is the last week of the month for following month publication) direct to the Editor, c/o Emerald Photographic Society, 1236 Debrick Rd., Eugene, OR 97401, or by email <bittled70@gmail.com>





EPS Preferred Vendors



Show your membership card to these vendors for nice discounts.
Be a good ambassador for EPS each time you receive these discounts
by letting these folks know how much you appreciate their support.



Dotson's Camera Store

1668 South Willamette Street

15% Discounts on in-house processing (including slide processing)



Derek Dickerson, Computer Technician

PCs & Macs, Hardware, Upgrades, Networks

888-458-5650 Cell: 541-335-9912 or www.teQmo.com

*Your camera's home
away from home*

Focal Point Photography

161 West Ellendale, Dallas, OR

Equipment Rentals, Trade Ins, discounts on most items Call Mike Lowery, 503.623.6300

Oregon Gallery

199 East Fifth Avenue, Eugene

15% discount on all matting and framing

***The Shutterbug* Camera Stores**

Two Stores 207 Coburg Rd. & Valley River Center

10% discount on photo accessories and photo finishing

U of O Bookstore Art Department

Corner of 13th Ave. & Alder St.

20% discount on all art supplies

Vistra Gallery

160 East Broadway, Eugene

20% discount on printing, matting & framing, Up to 30% on orders over \$500