

Jun
2015

The BELLOWS

Schreiner's Iris Garden, Ridgfield, WA, NWR, Finley - Bruce Rd., Fern Ridge Lake

Hot Photo Ops Abound. *Be There!*

The time is NOW! The local and nearby spring hot spots for wildlife and flowers are at their peak for the shots we've waited for all winter.

Yes, even the weather is beginning to cooperate with a warm sunny day or two in between diminishing showers.

The closest locations will be Delta Ponds near Valley River Center. Next, Fern Ridge Lake at the end of Royal Ave. or just off Hwy. 126 west of Greenhill Rd.

Next closest is on Bruce Rd. at the south end of Finley WR six mi. north of Monroe, then two miles west of Hwy. 99W.

continues on next page

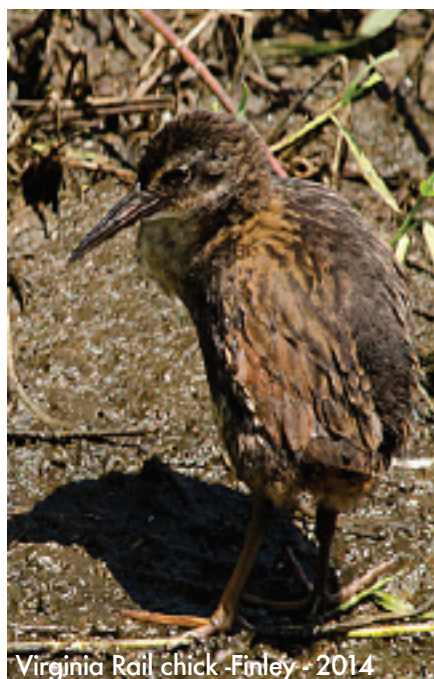


Schreiner's - 2015



Schreiner's - 2015

Iris Garden



Virginia Rail chick - Finley - 2014

Finley, Bruce Rd.



GBH - Ridgfield - 2014

Ridgfield NWR

Inside This Issue

- | | |
|--|---|
| • Spring Photo Op Hot Spots continued | 2 |
| • McNalley Workshop - Baker Award of Merit | 3 |
| • All Nature iPhone App - iPhone to Microscope | 4 |
| • Ask Tim Grey - UV Filter - Crop Tool - Exporting | 5 |
| • 4Cs Convention Workshop/Field Trip schedule | 7 |
| • Stolen / Internet - Some Odd Architecture | 8 |
| • What To Know - Where To Go | 9 |



Photo Hot Spots continued

A little farther up I-5 to exit 263 north of Salem, take the Brooks exit and go east from the freeway to the first traffic signal on Hwy. 99E and turn south. Turn right again a mile south onto Quinaby Rd. and travel back over the freeway for an elevated view of the iris fields. Park on the right after crossing the freeway and in the Schreiner's garden you'll find a plethora of species in addition to the expected iris. Food, restrooms and gift shop are also there.

The final hot spot for a complete day trip is located across the Columbia River north of Portland.



Yellow Hd. Blk Brd - Finley 2014

Bruce Rd. at Finley

From I-5 take the Ridgefield exit west into town.

Watch for 9th St. and turn south. **(No sign for refuge at this turn.)**

One mile south on 9th St. a big sign on Refuge Rd. Cross the tracks, pay the day fee at the visitor shack, then follow the dos & don't signs on the drive route. Restrooms are at the half way point. Be sure to bring your longest lens and even then your results may vary.

Bruce Bittle



Schreiner's - 2015

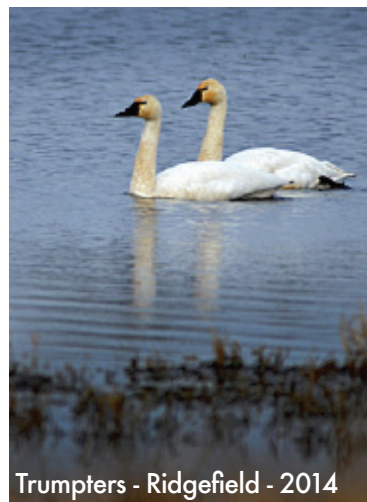


Schreiner's - 2015



Schreiner's - 2015

More than iris at the garden



Trumpeters - Ridgefield - 2014

Ridgefield



Coots - Finley - 2014

FIELD TRIP POSSIBILITIES

MAY

Mt. Hood Pear Festival (ON)
Finley Wildlife Refuge * (DT)
Ridgefield WR, WA (DT)
Klamath Wildlife Refuge (ON)
Schreiner Iris Gardens (DT)
East WA Palouse Area (ON)

JUNE

Columbia Gorge (DT)
Guided Valley Tour (DT)
U of O Walk Around (L)
Woodburn Drags 27th - 28th (DT)

JULY

Civil War Reenactment, 4th (DT)
Fireworks, 4th (DT)
Shaniko (DT)

AUGUST

Covered Bridges (L)
Madras Air Show, 28-29 (ON)
Downtown Walk Around (L)

SEPTEMBER

Elkton (DT)
Clear Lake (ON)

OCTOBER

4Cs Conv., 9-10 Walla Walla (ON)
Black Butte Aspens (DT)

NOVEMBER

Oakland Cemetery (DT)
Century Farm Seed Mill (DT)

DECEMBER

ShoreAcres (ON)
Lighthouses (DT)

JANUARY

Coast Aquarium (DT)
Newport Waterfront (DT)
Antique Machine Shop (L)

FEBRUARY

Asian Festival (L)
Carousel Museum (DT)
Brooks Truck Museum (DT)

LET US KNOW

If you have an idea or know of a good location for a field trip, tell **Kathy Baker**

*L = Local •DT = Day Trip •ON = Overnight

Photos by
Bruce Bittle
(Location & date
as noted)





Greg Giese Continues Winning At NPPNW

EPSer, **Greg Giese**, won a second place award at the most recent gathering of the Nature Photographers of the Pacific Northwest at Portland State University in Portland.

The Bellows failed to report this award along with others won by members that were reported last month. However, Greg tells us that this is his fifth award from NPPNW in the last two years, so we owe him a huge apology for not recognizing his efforts.

Congratulations Greg!



Emerald Art Center Workshops

~ *Photographing our Dreams & Memories* ~

Eileen Rafferty



Eileen Rafferty

July 24-27, 2015

9am Friday - 6pm Monday
Starts/end times for other days may be
early morning and/or late evening to
accommodate field shoots.

\$750 for members
\$800 for non-members

Classroom & Location

Advanced Beginner
...and Beyond

The Bellows will keep EPSers advised of up-coming workshops that will be taking place at the Emerald Art Center on Main St. in Springfield.

These two take place while EPSers are on Summer Break and are part of a series that will take place over the next months. Watch for others scheduled later this year.

Questions should be directed to Deb Ingretson at the EAC who is making all the arrangements for each workshop.

**NO EPS MEETINGS
JULY & AUGUST**

The first EPS meeting after the summer break will be **Tuesday, September 1st**. Same time & same place at the Wilamalane Adult Activity Center 7 - 9 pm
215 W. C St. Springfield

HAVE A GOOD SUMMER!

~ *Introduction to Macro Photography* ~

Elizabeth Stone



August 28-30, 2015

Friday 9am - 8pm
Saturday 9am - sunset
Sunday 6am - 5pm

\$550 for members
\$600 for non-members

Classroom & Location

All Levels

Must be familiar with all operations of their camera and have worked in manual mode.

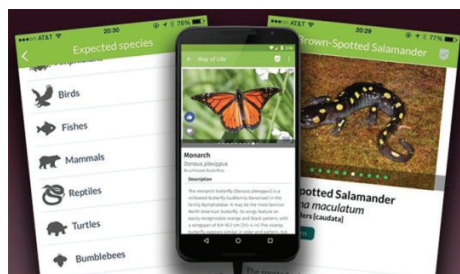


App Puts All Of Nature In The Palm Of Your Hand

People can check out local wildlife wherever they are in the world with a new App that tells what species of animals and plants should be nearby.

The free *Map of Life* app dispenses with bulky field guides by allowing users to access a vast global database of species and their ranges, based on their location.

"The app, built from 100 years of knowledge, puts a significant proportion of our global information about biodiversity in the palm of your hand," said guiding force behind the Map of Life Professor



Walter Jetz, a Senior Scientist at Imperial College London and an associate professor at Yale University.

"Think of a field guide that continues to improve the more we all use it and add to it. That is the

beauty of this mobile application, because thanks to a recording feature, citizen scientists everywhere can log their bird encounters and dragonfly sightings directly into the app and add to the biodiversity data available to others around the world," said Professor Jetz.

The Map of Life app is available in six languages for iPhone and Android smartphones, and can be downloaded from <https://mol.org/mobile>.

May 12, 2015, Imperial College London. Reported in Science Daily.



*EPS Will Have No Meetings
In July & August
Have A Happy Shooting Summer*

3¢ Lens Turns Smart-Phone Into Microscope

Assistant professor Wei-Chuan Shih, of electrical and computer engineering at UH, said the lens can work as a microscope, and the cost and ease of using it -- (it attaches directly to a smartphone camera lens), without the use of any additional device -- making it ideal for use with younger students in the classroom.

It also could have clinical applications, allowing small or isolated clinics to share images

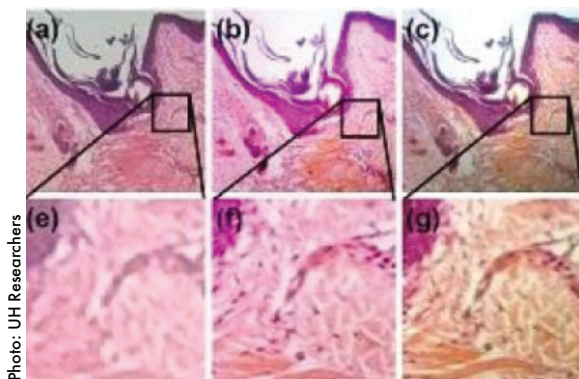


Photo: UH Researchers

Top row shows human skin and bottom row shows magnified regions using a smart-phone with a 3¢ polymer lens.

with specialists located elsewhere, Shih said.

The lens is made of a polymer

with the consistency of honey, dropped precisely on a pre-heated surface to cure. The resulting lenses are flexible, similar to a soft contact lens, although they are thicker and slightly smaller.

It's estimated that it will cost about 3 cents to manufacture the lenses in bulk. A conventional, research quality microscope, by comparison, can cost \$10,000.

Reported in Science Daily, May 5, 2015





Q&A With Tim Grey

ASK?
tim
grey

Q: *Through the years I have read the pros & cons of UV filters, but I am not sure how much the filters help with digital files.*

A: This debate is older than I am, and yet it continues. For most digital cameras a UV filter doesn't provide a significant benefit. Overall image quality will be degraded slightly, and a risk of flare increases with any filter.

The only "real" argument (in my view) in support of a UV filter is lens protection. If protection is your aim, I recommend a high-quality clear protective filter rather than a UV filter. Or just use your lens hood to help protect the lens (and reduce flare). Or just be careful with your lenses.

Put simply, I prefer not to use a UV filter, for a variety of reasons. I don't consider the UV filter to be important, [yet] if having one on a lens provides peace of mind, I'm in favor of that. So feel perfectly comfortable with either decision as far as I'm concerned.

Ed note: Tim missed who perpetuates this UV filter myth and why. Camera sales people love UV filters because they cost pennies and the mark up is in dollars. It's like new car upholstery protection. You're paying extra for YDNI. (Pronounced "yid-nee" meaning, You Don't Need It.)

Q: *In Photoshop CC I set the crop size I want, such as 11 x 14, and it shows the aspect ratio, but not the size. This is annoying because when printing, I have to re-size.*

A: The issue here is the default behavior for the Crop tool in Photoshop not re-sizing the image. When entering values for the width and height for the crop, that's really just defining an aspect ratio. But you can change this behavior so that you are re-sizing as part of the crop.

To do so, Select the Crop tool and click the left end of Options bar, then choose "W x H x Resolution." in the popup. So, now you could, for example, set the width to "11 in", height to "14 in" and resolution to 360 pixels per inch. Then, when you crop the photo, it will also be re-sized to the exact pixel dimensions defined by the settings you entered.

My approach is to separate cropping and re-sizing. I crop the photo optimizing it based on my aesthetic preference for the image. I then work with a copy to create a print version, then re-sizing.

Of course, if the crop for print differs from the master crop, then using the option to re-size the new crop is obviously very convenient.

Q: *When exporting an image from Lightroom to an iPad, I understand 2048 pixels (long dimension) is good. But, what should I put in the resolution box?*

A: The pixels per inch (ppi) for image resolution does not matter unless it's being printed. For an image to share electronically, it doesn't matter what you set the ppi resolution to. All that matters is how many pixels are in the image.

For example, sharing an image to an iPad, it makes sense to size it to match the pixel dimensions of the iPad display. For the latest iPad tablets, the resolution is 2048x1536 pixels. So size your images to 2048 pixels on the long edge to get great results.

For printing, absolutely set the ppi resolution based on the type of printed output you're producing.

For electronic, you don't have to worry about the ppi value at all. I recommend setting the ppi resolution value to your lucky number, just for fun.



Tim has a dozen books, published hundreds of magazine articles and is a member of the Photoshop World Dream Team.

[Ed Note: Articles are reprinted with permission & shortened to fit space.]



4Cs Convention, Walla Walla, October 9-11



Free Seattle Event To Precede 4Cs Convention

The 11th Annual JVH Digital Festival & Workshop is being held in the Seattle/Bellevue area. Thursday, Oct 7-8, 2015

This free educational event brings high value to anyone interested in large-format digital printing.

Art Wolfe will be one of our speakers, showing his latest images and the environmental causes they highlight.

Epson will be unveiling it's new printer technologies. and also vendors from Hanhnmühle, Canson, Premiere, McGrann Digital, ColorByte, and EFI.

The free Print Contest is also a lot of fun, "there are no rules," although we do have a few guidelines.

The Workshop on Wednesday, October 7 (a nominal fee includes lunch) will enhance your technical

knowledge on producing large-format prints, canvas stretching, file preparation, managing color in PhotoShop and LightRoom, selecting media for fine art, photographic and signage, plus many practical ideas and tips.

Note: John Harrington will be a speaker/vendor at the 4Cs convention in Walla Walla the following two days.



**2015 4Cs Convention Schedule October 9-10**

Blue Mt. Camera Club, Walla Walla

PRELIMINARY**PRELIMINARY**

	ROOM 1	ROOM 2	ROOM 3	
FRIDAY	9 - 10	TBA	TBA	Lightroom Tabs Larry Goodhew
	10:30 - 11:30	HDR Blake Rudis	People Travis Wilson	TBA
	11:30 - 12:30	LUNCH		
	12:30 - 1:30	Lightroom 1 Burkhalter	iPhone Dave Perry	??? Larry Goodhew
	2:00 - 3:00	Lightroom 2 Burkhalter	Astro Kristen Hill	??? Paul Bannick
	3:30 - 4:30	Strange FX Ken & Lydia Strange	People Travis Wilson	Birds of Prey Paul Bannick Field Trip
	5:00 - 6:00	Projected Show Winners Bruce Bittle		
	6:00	NO HOST MIXER		

SATURDAY	9 - 10	HDR <i>Blake Rudis</i>	iPhone <i>Dave Perry</i>	Mirrorless <i>Neil Saintonge</i>
	10:30 - 11:30	Darrell Gulin – The 4As of Wildlife		
	11:30 - 12:30		LUNCH	
	12:30 - 1:30	Strange FX <i>Ken & Lydia Strange</i>	Astro <i>Kristen Hill</i>	TBA
	2:00 - 3:00	TBA	TBA	Critique <i>Neil Saintonge</i>
	3:30 - 4:30		iPhone <i>Dave Perry</i>	
	5:00 - 7:00	KEYNOTE PRESENTATION- Darrell Gulin		
	7:30 - 9:30	4Cs AWARDS DINNER – SILENT AUCTION		

SUNDAY	9 - 10	Board of Directors Breakfast	
	10:00 - 12:00		Horse Roundup Field Trip



Stolen From The Internet

More Architectural Oddities From Around The World



Hotel "Four Seasons"- Bora Bora



Floating Island Houseboat - Iceland



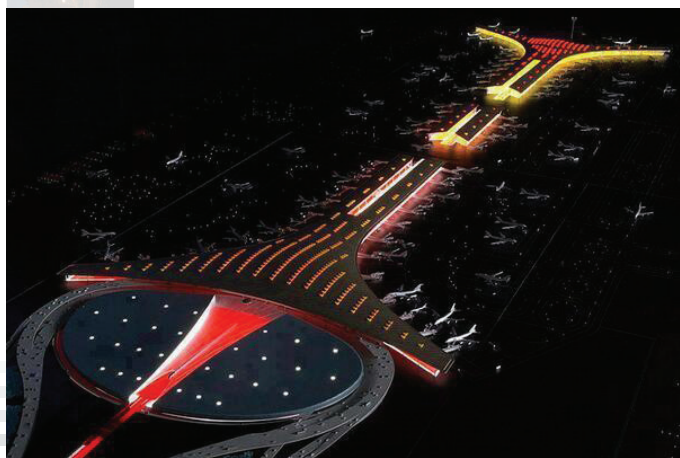
World's Largest Swimming Pool - Chile



Crystal Palace - Madrid



World's Highest Infinity Pool - Singapore



Beijing Airport - China



Conservatory of Music - China





What To Know

June 2015

- 2 Challenge Night - Theme TBA May 5
- 9 Ed. Night, **TBA**
- 16 Print & Digital Competition night
- 23 Beginners Q & A – Demo night

**No EPS
Meetings
July & August
Have a Happy
Shooting Summer**

September 2015

- 1 Challenge Night - Theme TBA June 2
- 8 Ed. Night, **TBA**
- 15 Print & Digital Competition night
- 22 Beginners Q & A – Demo night

October 2015

- 6 Challenge Night - Theme TBA Sept. 1
- 13 Ed. Night, **TBA**
- 20 Print & Digital Competition night
- 27 Beginners Q & A – Demo night

November 2015

- 3 Challenge Night - Theme TBA Oct. 6
- 10 Ed. Night, **TBA**
- 17 Print & Digital Competition night
- 24 Beginners Q & A – Demo night

December 2015

- 1 Challenge Night - Theme TBA Nov. 3
- 8 Print & Digital Competition night

**Only Two Meetings
this month**

Where To Go

• **Lois Johnson -**

Will have a show, "Critters," in the Harris Hall lobby at the Lane County Courthouse 125 East 8th Ave. Her show can be seen through all of June between the hours of 8-5 weekdays.

• **EPS Members -**

Will have a show in July at Harris Hall lobby at the Lane County Courthouse that can be seen 8-5 weekdays through July. Show goes up July 1st, comes down July 31st.

• **Jann Gail -**

Will have a one person show at Dotsons beginning August 14th through September 10th with a reception the 14th from 5-6 pm.

• **Norm Cholewinski -**

Will have a one person show in the Harris Hall lobby at the Lane County Courthouse 125 East 8th Ave. His show can be seen 8-5 weekdays in August.

Got a show?

**We want to know!
Have a show going up?**

*Send complete details
(location, time, theme, etc.)*

**Have your photos
been published?**

*Send complete details
<bittled70@gmail.com>*

Classified

**Classified Ads
Free to all
EPS members**

**This
Space
Available**

EPS WHOLESALE print show supplies

\$6 MATS (16"x 20" OD).
Double whites, acid-free
surfaces with stiff backers.
*Center-cut with 10"x 15"
or 12"x 16" openings.*

\$14 WHITE MATS BLACK CORE
*Available only with 10"x 15"
center-cut opening.*

\$15 FRAMES (16"x 20" OD).
Black or Silver aluminum,
with hardware & glass.

\$5 TRANSPORT BOXES
for framed images.
(some assembly req.)

**\$2 from each mat, frame
or box purchase
goes to EPS.**

**Contact:
Bruce Bittle 541.343.2386**

Legal Stuff

The Bellows is published ten times per year by the Emerald Photographic Society, a not-for-profit organization, and is completely supported by EPS funds. All materials within do not necessarily reflect the views of the EPS Board of Directors, officers, membership, supporting vendors or editor of this publication. All brand and product names listed are trademarked and/

or registered and are not necessarily endorsed by EPS. However, EPS does endorse vendors offering our members discounts listed on the last page (randomly on other pages) of each issue.

Reprinting articles from *The Bellows* for non-commercial use is permitted as long as the photo or article is not copyrighted and source credit is given to the author and this newsletter. Any other

type of reproduction requires specific written permission from the editor.

Inquiries about, or submissions for *The Bellows* (deadline is the last week of the month for following month publication) send to Editor, c/o Emerald Photographic Society, 1236 Debrick Rd., Eugene, OR 97401, or by email <bittled70@gmail.com>





EPS Preferred Vendors



Show your membership card to these vendors for nice discounts.
Be a good ambassador for EPS each time you receive these discounts
by letting these folks know how much you appreciate their support.



Dotson's Camera Store

1668 South Willamette Street

15% Discounts on in-house processing (including slide processing)



Derek Dickerson, Computer Technician

PCs & Macs, Hardware, Upgrades, Networks

888-458-5650 Cell: 541-335-9912 or www.teQmo.com

*Your camera's home
away from home*

Focal Point Photography

161 West Ellendale, Dallas, OR

Equipment Rentals, Trade Ins, discounts on most items Call Mike Lowery, 503.623.6300

Oregon Gallery

199 East Fifth Avenue, Eugene

15% discount on all matting and framing

***The Shutterbug* Camera Stores**

Two Stores 207 Coburg Rd. & Valley River Center

10% discount on photo accessories and photo finishing

U of O Bookstore Art Department

Corner of 13th Ave. & Alder St.

20% discount on all art supplies

Vistra Gallery

160 East Broadway, Eugene

20% discount on printing, matting & framing, Up to 30% on orders over \$500