

Dec.  
2015

# The BELLOWS

*Weathered stone, flaking paint, rusty iron – Yes! Oakland is a favorite EPS place*

## Fourteen EPSers Enjoy Oakland Trip

**T**rekking on the official field trip for November to the old Oakland, OR cemetery were welcomed by a cloudy but dry day in what has otherwise been a fairly wet fall.

The cemetery is on the Register of Historic Places as is most of the small town of Oakland. Less than an hour's drive from Eugene this location affords photographers an easy, fun day of shooting.

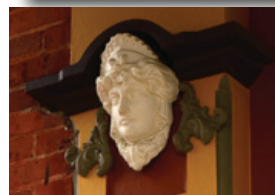
Many of the ornamented buildings on Main Street are antique stores loaded with a wide variety of historic accouterments in keeping with the general town theme.

One of the best antique stores is the town's most famous restaurant, Tolleys. The interior is a photo op that always deserves a look. Lunch will be so good you'll have to come back again to experience one of their old fashioned malts or shakes where a tall classic glass and the nearly full metal mixing cup is always served.

**Adrienne Adams** is assembling a show of shots from each photographer that will be seen at a future meeting. Let the record show that eighty or more EPSers missed this great little trip.

Upcoming field trips for the next couple of months and other photo opportunities are listed on the next page.

*Bruce Bittle*



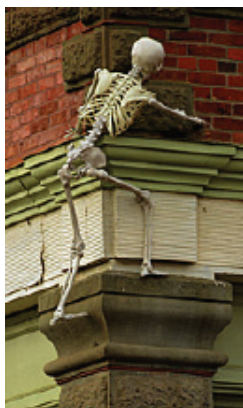
*More pictures on next page.*

*Only Two  
Meetings  
This Month  
Happy Holidays*

### Inside This Issue

- More Oakland Field Trip photos 2
- EPS Student Mentoring program 2
- **Mark Gottchel** wins at Spfd Mayors Show 3
- Digital Program Identifies Objects in Photos 3
- Canon Video Answers EPS Question - Maybe 4
- Eye Opening Comments About Canon Video 5
- Ask Tim Grey - Archive - Auto Sensor Clean 6
- "Selfie-Stickers Clog National Parks 7
- What To Know - Where To Go - Classifieds 8





## Oakland Field Trip Photos continued



All Photos – B. Bittle



### FIELD TRIP POSSIBILITIES

**DECEMBER**  
ShoreAcres (ON)  
Lighthouses (DT)

**JANUARY**  
Coast Aquarium (DT)  
Newport Waterfront (DT)  
Coast Lighthouses (DT)

**FEBRUARY**  
Asian Festival (L)  
Carousel Museum (DT)  
Brooks Truck Museum (DT)

**THE PERPETUAL LIST**  
Willamalane Parks Activities (L)  
Downtown walk-around (L)  
Springfield Alleys (L)  
(Daytime only with partners)  
Riverside Bike Paths (L)  
Construction Equipment (L)  
Car/Boat/Antique Shows (L)  
Fern Ridge Activities (L)  
Frisbee Golfers, RC Sailboats at  
Alton Baker Park (L)

**LET US KNOW**  
If you have an idea or know of  
a good location for a field trip,

\* L = Local •DT = Day Trip •ON = Overnight

## EPS Photo Outreach Mentors Teach UofO Students

The fall term Environmental Studies Program at the U of O once again utilized the **EPS Student Mentoring Program** coordinated by **Bob Petit**. Two university professors, Peg Bolay and Katie Lynch, with ten students successfully completed a *Water Reflections Program* photographed at Delta Ponds.

The following EPS Photographer Mentors helped make the program a

success: **Chris Kilpatrick**, **Marli Miller** (a Univ. Prof. and EPS member), **Barbara Combs**, **Kit Larsen**, **Tom Bruno**, **Gene Cleveland** and Project Leader **Bob Petit**.

Congratulations to all for a job well done!



Mentor Program - Student Photo



Mentor Program - Student Photo





## EPSers Make Portraits At Thanksgiving Dinner

**A**gain this year over 2,000 local folks in need were served complete meals with trimmings at the Whitaker neighborhood dinner. Part of the festivities included providing a free photo prints for families, couples, kids and all others standing in line.

**Stephen Franzen** was the project coordinator for this fourth year our club has pitched in to make this event a huge success. The comments EPSers hear from folks about their photos going to family and friends who haven't seen them in years are heart tugging.

Needy folks received a hot meal and warm clothing while our photographers received warm, heartfelt thanks for a job well done once again. Good job folks!



*From left: 2015 Whitaker Dinner photographers- Mark Kelley, Linda Devenow, Kassi Gaffney, Stephen and photo helper Judy Franzen. (Not pictured Adriene Adams)*



## WiFi Can Power Next Billion Gadgets & Cameras

**U**niv. of Washington engineers have developed a novel technology that uses a Wi-Fi router -- a source of untapped energy for indoor environments -- to power other devices.

The Power Over Wi-Fi (PoWi-Fi) system is one of the most innovative and game-changing technologies of the year, according to *Popular Science*, which included it in the magazine's annual "Best of What's New" awards announced Wednesday.

"For the first time we've made a system that can co-exist as a Wi-Fi router and a power source for sensors in cameras and other devices," said lead author Vamsi Talla, "and it doesn't degrade the quality of your Wi-Fi sig-



Photo - Dennis Wise - UofW

*Ambient router signals powers sensors in camera and other devices.*

nals while it's powering other devices."

PoWi-Fi could help enable the Internet of Things, where small sensors are embedded in everyday objects like cell phones, coffee makers, washing machines, air conditioners, mobile devices, allowing those devices to "talk"

to each other without needing a power source as they become smaller and more numerous.

The researchers tested the PoWi-Fi system in six homes. Users typically didn't notice deterioration in web page loading or video streaming experiences, showing the technology could successfully deliver power via Wi-Fi in real-world conditions without degrading network performance.

Future, PoWi-Fi could leverage technology power scaling to further improve the efficiency of the system to enable operation at larger distances and power numerous more sensors and applications.

*Science Daily - Nov. 18, 2015,  
University of Washington*



*Only two meetings this month. Happy Holidays*





## Gotchell Wins \$\$\$ At Springfield Mayors Show



*Award winning image "Perpetua Night" by Mark Gotchell.*

EPS member **Mark Gotchell** entered an image in the Springfield Mayors Art Show, which was shown at the Emerald Arts Center receiving a cash award from the Springfield Arts Commission for the image, "*Perpetua Night*." Mark has also been invited, as one of three Arts Commission award winners, to show a selection of his images in the Springfield City Hall Gallery (second floor by Library), which can be seen during the month of December.

Congratulations Mark!



## Thank You EPS

I just wanted to express our (WRC) gratitude for another round of beautiful parks photos from society members. We so appreciate the time and effort that you put into documenting these slices of life in Willamalane parks.

I can't wait to see what comes in next!

Janet Donnelly  
Public Affairs Coordinator  
Willamalane Park and Recreation District



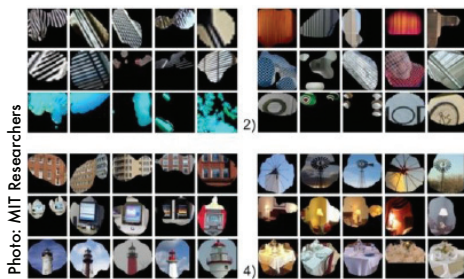
## Digital System Detects Objects In Scenes

**A**mong computer science researchers, the problem known as "scene recognition" has received relatively little attention.

At an Annual Neural Information Processing Conference, MIT researchers announced the world's largest database of images with 7 million entries.

Object recognition -- determining what objects are where in a digital image -- is a central research topic in computer vision. Researchers have now demonstrated that, en route to learning how to recognize scenes, a new computer system also learned how to recognize objects.

A machine-learning technique known as "deep learning" was used to train the most successful scene-



*Neural network tuned to geometric patterns also picks out particular classes of objects.*

classifier yet. As the network received more data, it readjusted its internal settings to try to produce more accurate predictions. It was about 50 percent accurate at labeling scenes -- where human beings are approximately 80 percent accurate.

To know that something is a bedroom, you need to see the bed; to know that something is a

conference room, you need to see a table and chairs. It was found, that the network is really finding these objects. But the researchers didn't know how their network was doing what it was doing.

Researchers plan to start from scratch retraining their network on the same data sets, to see if it consistently converges on the same objects, or whether it can randomly evolve in different directions that still produce good predictions.

Source: May 8, 2015, Massachusetts Institute of Technology. Reported in Science Daily May 9, 2015.







# Canon Tracks Eyes – Proves Photo Obsessiveness?

Three different people, an average person off the street, a photography student and a professional photographer, were shown this image as their eye movement was tracked. Eye tracking technology has been around for fifty years or more, but this Canon video advertising a new printer is using it for a purpose that ostensibly addresses many discussions in EPS meetings:

***“Where does an average viewer eye go when looking at our images compared to where our eye goes when we look at the same image?”***

This test might shed some light on this ever-present question. Then again, it may not after reading the posted comments about the video on the next page.

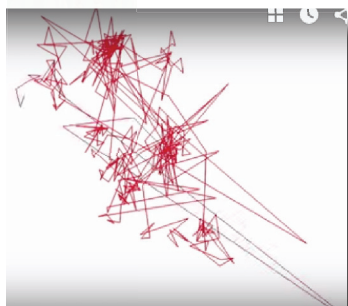
You get to be the judge on this one. Ed.

(All images are screen captures from the Canon video web advertisement that can be found at:

<<http://www.diyphotography.net/canons-experiment-shows-how-obsessed-photographers-are-over-the-details>/<http://sun-setwx.com/>>)



The Photo Seen by All



Average Viewer

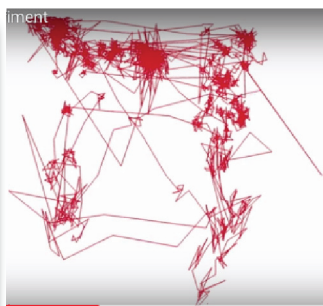
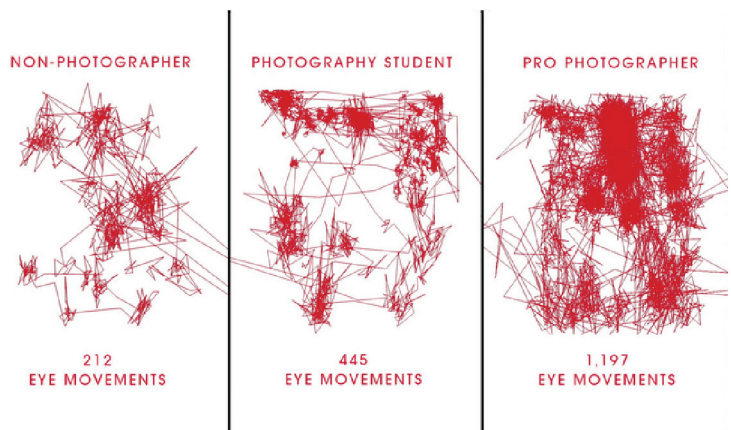


Photo Student



Pro Photographer



Side by side Comparison

***See some posted comment on next page***



# Here Are Some "Interesting" Comments

## Canon video comments:

**Brandon Price • 9 days ago**

I liked the idea of this, but I would have preferred a professional photographer who hadn't shot the original image. From personal experience, the time I spend processing an image forces me to become obsessed with every little detail, permanently affecting the way I look at it. (I guess that since it was advertising a printer it's really calling out to the photographer who is producing the work, but still.)

Still very cool, though.

**Alex Nemes • 21 hours ago**

It also doesn't take into context the fact the photographer who shot it already knows where to look, where an unknowing viewer needs to first figure out what they are even looking at.

Also were the sessions timed? Did they all view for the same amount of time?

**Brandon Price • 6 hours ago**

Good point. Would've been more objective were all three seeing it for the first time.

Another thing to consider... is it a matter of detail, or the fact someone who is not into photography is simply bored of the image after that short period of investment since they have nothing further to gain by looking at the details?

I don't think it's a matter of perfection, but rather the level of appreciation or value a person has on a particular thing they are looking at.

I also think the link to the video on "Feck Perfection" is certainly presenting some incorrect concepts about how creativity and perfection cannot

join together.

As the lone comment says, creativity is the exploration process, perfection is the result of continued applications of the explored ideas.

It's called... an advertisement.

**Ann Mehrman • 10 days ago**

The eye movements that were tracked indicate areas in the image that mirrored the comments that the people were making. They also plot



key areas of the photograph composition and what draws the viewer's eye into the image.

**Frank Nazario • 10 days ago**

It is sooo funny that Canon selected Joel Grimes... He is color blind!!!! and by his own admission he is overly zealous about the details of any of his photos Black & White or color LOL!!! Sorry, very cool ad, but I still find it funny.

**Dan C Lindsay • 10 days ago**

This again from Canon, doesn't show a true representation of what we see. For example Jared Polin from Froknowsphoto has a condition, as do others, which makes their eyes flicker all the time. I forget the name, but obviously that would show very very different results. I have seen a few of these videos recently and they all seem to give misrepresented information. Such a shame.

**Dan C Lindsay • 8 days ago**

I will say, I'm probably more obsessed with detail than when I was newer to photography. With every popular or award winning photo being so sharp and flawless these days, it makes you obsess over every ounce of image noise and -oh god, is that tiny detail out of focus? RESHOOT! RESHOOT EVERYTHING!

It might also be a self-esteem thing, but it's hard for me to feel good about my photos which might be well-focused but technically imperfect when I suddenly see that non-pro who has somehow managed to capture the most perfect of perfect shots with ZERO unwanted details. Makes you obsess over the most tiny imperfections in your own image.

It makes you become a better technical photographer, but it's definitely affected my care-free attitude towards my images.

**Sam • 10 days ago**

I see Canon is now in the business of viral videos. If they only put the same effort into mirrorless cameras. . .







## Q&A With Tim Grey

ASK?  
tim  
grey

**Q:** *I would like to keep my foreground subject in focus while blurring the background. Using Gaussian Blur [in Photoshop] if I select my foreground to protect it from the blur, this causes a “bleed” of color at the selection edges. Any suggestions on a work around?*

**A:** The simple solution here is to use the Lens Blur filter (instead of the Gaussian Blur filter) in conjunction with a saved selection. The Lens Blur filter can use the saved selection as a mask, which will protect the areas you don't want to blur and prevent the “bleed” effect you're seeing with Gaussian Blur.

The basic process involves working on a copy of the Background image layer, creating and saving a selection of the area you want to blur, and then applying the Lens Blur filter with the saved selection set as the mask for the filter.

In the days before the Lens Blur filter was available (it was introduced with Photoshop CS), it was possible to work around the limitation of the Gaussian Blur filter. This involved creating a selection of the area you wanted to blur, then applying a one-pixel Gaussian Blur to the selected area. You could then contract the selection by one pixel using the Contract command (Select > Modify > Contract) with the value for “Contract By” set to one pixel.

By repeating the process of blurring and contracting, by one pixel at a time for each, you are effectively building up the blur by an increasing amount as you move the selection outward from the edge of the area you're

protecting. You can automate this process with an action, but it is still far less efficient than using the Lens Blur filter combined with a saved selection.

**Q:** *Assuming that some Photoshop versions are going to be obsolete in the future, would it be wiser to save my photos in TIFF or PSD? I am a single app user with several plug-ins and don't subscribe to Creative Cloud.*

**A:** In terms of preserving your images in a way that will ensure you can use software other than Photoshop in the future to open those images, there are two key things you need to consider.

The first is the basic compatibility of the file format. In this case, there is far more support for the TIFF file format than there is for the (proprietary) Photoshop PSD file format. Therefore, from an archival storage standpoint it is safer to save your images in the TIFF file format.

However, Photoshop enables you to save your images with layers in the TIFF file format, but those layers can't be understood by other software as they are features that are specific to Photoshop. Therefore, to ensure broad compatibility it is best to save a copy of your images as a flattened TIFF image.

So, you might retain your master images with all layers intact in the Photoshop PSD file format, but then create additional archive copies of the images as flattened TIFF images. I don't think it is critical to perform that additional step right away, since I don't think you'll be without access to Photoshop anytime soon. However,

it is certainly a good idea to plan for the long-term archival storage of your photos.

**Q:** *To what extent should I feel confident that my camera's automatic sensor cleaning is going to keep my sensor clean?*

**A:** Actually a very good question, and important that photographers understand. This cleaning uses high-speed vibrations to shake dust loose, with an adhesive that catches that dust preventing it from reattaching to the sensor.

I consider this to be very helpful for “dry dust” that attaches to a filter in front of the sensor by an electrostatic charge. [With] power [off] and vibration applied, this dust will (hopefully) fall to the adhesive.

With moisture in the air the dust that attaches to the sensor is wet and probably won't shake free. “Wet dust” dries to form a stubborn spot on your sensor that can be difficult to clean.

The automatic cleaning function is a very good thing, and I'm grateful to have this option. However, it's important to keep in mind that this automatic cleaning function won't resolve all blemishes on your sensor.



*Tim has many books, hundreds of magazine articles – is a member of the Photoshop World Dream Team.*

*[Ed Note: Articles are reprinted with permission & shortened to fit space.]*



# Hot Spots In Nat. Pks. Getting Way Too Hot



Photo - Tony Mason OCPA

*Forty people in this shot with another bus load coming up the trail.*

That headline has nothing to do with yet another story about global warming. Yes, it's true that some National Parks can be blistering hot on the thermometer scale at certain times of the year. Try Death Valley or Canyon Lands in July or August. Most landscape photographers know that's nothing new.

However, while I was at the 4Cs Convention in Walla Walla this past October, I heard an alarming story from two different sources about the unbelievable crowds serious photographers are encountering at photo hot spots in our NPs.

My passenger, Tony Mason, from the Coos Bay Camera Club had just returned from a trip to Mesa Arch in Canyon Land in UT. This is a sunrise shot so you want to be there long before the sun comes up. Tony said he was and found a half dozen guys already there.

The problem is, this location is far smaller than it looks in photos. So, you'd better be there early. If you count more than a dozen cars in the parking lot you're going to be shooting between tripod legs.

Tony got his shot, but a couple of weeks later, Darrell Gulin, the keynote speaker at the convention also gave everyone a heads up about the unbelievable hoards of amateurs that are now preventing almost everyone from getting decent shots. The shot above is what Darrell had to settle for.

Who are these spoilers and how do



Photo - Darrell Gulin

*Certainly an acceptable shot, but definitely not what Gulin wanted.*



Photo - Bruce Bittle

*This is what's possible when fewer than a dozen shooters are there.*

they arrive in huge groups? It appears that the tour bus companies have learned that advertising that they stop at good photo locations is

worth big bucks to them. Arrrrgh!

So, be prepared to have a hoard of "selfie-stickers" ruin your day.

Bruce Bittle







## What To Know

### December 2015

- 1 Challenge Night - Theme *MOTION*
- 8 Print & Digital Competition night

**Only Two Meetings  
this month**

### January 2016

- 5 Challenge Night - Theme TBA Dec 1
- 12 Ed. Night, **TBA**
- 19 Print & Digital Competition night
- 26 Photo Forum Night, Q & A, Demos

### February 2016

- 2 Challenge Night - Theme TBA Jan 5
- 9 Ed. Night, **TBA**
- 16 Print & Digital Competition night
- 23 Photo Forum Night, Q & A, Demos

### March 2016

- 1 Challenge Night - Theme TBA Feb 2
- 8 Ed. Night, **TBA**
- 15 Print & Digital Competition night
- 22 Photo Forum Night, Q & A, Demos

### April 2016

- 5 Challenge Night - Theme TBA Mar 1
- 12 Ed. Night, **TBA**
- 19 Print & Digital Competition night
- 26 Photo Forum Night, Q & A, Demos

### May 2016

- 3 Challenge Night - Theme TBA Apr 5
- 10 Ed. Night, **TBA**
- 17 Print & Digital Competition night
- 24 Photo Forum Night, Q & A, Demos

## Where To Go

### • Mark Gotchall -

Will have a show up for the month of December at the Springfield City Hall Gallery. The display will be in the hallway just outside the Springfield Library. The show is a collection of his recent images including his winners.

### • Bill Haynes -

A two part show, will be at Don Dexter's dental office at 2233. Willamette St. The show can be seen through December and will have two themes:

B & W images from Eastern OR & WA focusing on agriculture & ranching lifestyle. The second part will be color images of small fishing boats from Ireland, Portugal, Italy & Morocco.

### • Bruce Bittle -

Will have a wildlife show in the Harris Hall Lobby of the Lane County Courthouse, 125 E. 8th Ave. that can be seen until the end of December.

## Classified

### Classified Ads Free to all EPS members

#### WANTED

Nikon D4 in good condition at a fair cash price. Contact **Wayne Harrison** 541 554 2380

#### For Sale

Bogen Pro model tripod #3431. Ball head & Quick release plate \$200. Call **Don Lown** 541-942-6462 or donlown33@gmail.com

### EPS WHOLESALE print show supplies

**\$6 MATS (16"x 20" OD).**

**Double whites, acid-free surfaces with stiff backers.**

*Center-cut with 10"x 15" or 12"x 16" openings.*

**\$14 WHITE MATS BLACK CORE**

*Available only with 10"x 15" center-cut opening.*

**\$15 FRAMES (16"x 20" OD).**

**Black or Silver aluminum,**

*with hardware & glass.*

**\$5 TRANSPORT BOXES**

*for framed images.*

*(some assembly req.)*

**\$2 from each mat, frame or box purchase goes to EPS.**

**Contact:**

**Bruce Bittle 541.343.2386**

**Got a show?  
Have images published?  
We want to know!**

*Send complete details  
<bittled70@gmail.com>*

## Legal Stuff

**The Bellows** is published ten times per year by the *Emerald Photographic Society*, a not-for-profit organization, and is completely supported by EPS funds. All materials within do not necessarily reflect the views of the EPS Board of Directors, officers, membership, supporting vendors or editor of this publication. All brand and product names listed are trademarked and/or registered and are not necessarily endorsed by EPS. However, EPS

does endorse vendors, offering discounts to our members, listed on the last page (randomly as space allows on other pages) of each issue.

**The Bellows** policy is to always adequately attribute all images & posted content. **The Bellows** can not be responsible for images or any other content acquired from unidentified web pages with no visible attribution or on-line contact information.

Reprinting articles from **The Bellows** for non-commercial use is permitted so long

as the photo or article is not copyrighted and source credit is given to EPS, the author and this newsletter. Any other reproduction requires specific written permission from the editor.

Inquiries about, or submissions for **The Bellows** (deadline is the last week of the month for following month publication) send to Editor, c/o Emerald Photographic Society, 1236 Debrick Rd., Eugene, OR 97401, or by email <bittled70@gmail.com>





## *EPS Preferred Vendors*



Show your membership card to these vendors for nice discounts.  
Be a good ambassador for EPS each time you receive these discounts  
by letting these folks know how much you appreciate their support.



### **Dotson's Camera Store**

1668 South Willamette Street

15% Discounts on in-house processing (including slide processing)

*Your camera's home  
away from home*

### **Focal Point Photography**

161 West Ellendale, Dallas, OR

Equipment Rentals, Trade Ins, discounts on most items Call Mike Lowery, 503.623.6300

### **Oregon Gallery**

199 East Fifth Avenue, Eugene

15% discount on all matting and framing

### ***The Shutterbug* Camera Stores**

Two Stores 207 Coburg Rd. & Valley River Center

10% discount on photo accessories and photo finishing

### **U of O Bookstore Art Department (Basement)**

Corner of 13th Ave. & Alder St.

20% discount on all art supplies

### **Vistra Gallery**

160 East Broadway, Eugene

20% discount on printing, matting & framing, Up to 30% on orders over \$500