

Jan.
2016

The BELLOWS

Big iron, big steam, big smoke, big group, big fun

Good Big Steam-Up Shoot In Portland

The first Sunday last month found more than a dozen EPSers ready rain

or shine for a complete day of shooting at an invitation only event in Portland.

This was the Epic Steam Locomotive Shoot co-sponsored by Focal Point Camera Store in Dallas, OR and Sony to take place just outside of the new Oregon Rail Heritage Museum across the street from OMSI.

Tickets (\$100) quickly sold out as only forty were available for this rare photo event. Our contact, Mike Lowery, owner of Focal Point, and the regional Sony rep had first class preparations in place upon our arrival.

After a free latte, a look at the goodies in our swag bag and a quick safety refresher from the docents at the museum (See tracks? Think TRAIN!), we were ready to shoot. Wow, we couldn't possibly miss it!

The number 700 SP&S (Spokane Portland & Seattle) locomotive is a monster. This was one of the first times, after ten years of volunteer preparation, that the museum folks could show its stuff. Several of us believe they were having more fun than the photographers.

While the huge carbon-footprint daytime demonstrations were impressive, the back-lit night shots were the most fun.

Thank you Mike and Sony for a great photo day.

Bruce Bittle



*All 2016 membership dues are due this month.
\$35 single - \$45 couples - \$20 students for the entire year!*

Inside This Issue

- More Steam Up photos 2
- **Norris & Reynolds** EPSers Winning Images 3
- *Science Daily* – Color from Nano Particles 3
- New EPS Officers & By Law Changes 4
- **D. Becker** One Person Show at O'Brien Gallery 5
- Ask Tim Grey – *Filename* – *Keystrokes* – *Blend* 6
- *Peoples' preferences for landscape colors* 7
- What To Know - Where To Go – Classifieds 8



Steam Up Shoot *continued*



EPSer Tom Bruno had connections to these two actors who had proper period clothing for the event.



The above group shot is missing several other EPSers who were there.



The group below was also incomplete of the forty photographers limited to this invitation only event sponsored by Focal Point in Dallas and the regional Sony representative..



Annual EPS Membership Dues Are Due



Images By Two EPSers Receive Recognition Awards

Betsy Norris received an Honorable Mention in the Finley Wildlife Refuge photo contest for her image of the small wetlands on Bruce Rd. at the south end of the refuge.



Gina Reynolds received an Honorable Mention award in the monthly Columbia Council of Camera Clubs competition for her photo, "Two Sabres," depicting Korean War era F-86 fighters in super close formation.



Possible New Color Displays From Nanoparticles

A new method for using metal nanoparticles may allow electronics makers to build full-color displays using their stable, inexpensive light-scattering capabilities.

"Wouldn't it be interesting if we could create stained-glass windows that changed colors at the flip of a switch?" said Christy Landes, associate professor of chemistry at Rice University.

Research by Landes and others at Rice's Smalley-Curl Institute could allow the use of standard electrical switching techniques to construct color displays from nanoparticles that scatter different colors of light.

For centuries, stained-glass makers have tapped the light-scattering properties of tiny gold nanoparticles to produce glass with rich red tones.

Similar types of materials could increasingly find use in modern electronics as manufacturers work to make smaller, faster and more energy-efficient components that operate at

optical frequencies.

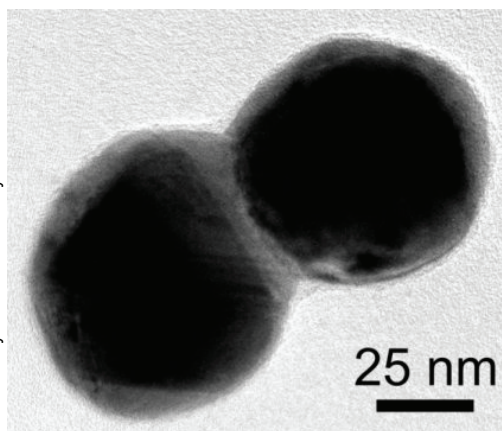
Gold nanoparticles are particularly attractive for electrochemical display purposes, because they can produce a variety of specific colors

and are extremely stable. Even though gold is expensive, very little is needed to produce extremely bright colors.

"Hoping to make a display by electrically switching optically active nanoparticles has proven very difficult to achieve," Landes said. "What we've shown is variation of the coupling mechanism itself, which can be used to produce huge color changes both rapidly and reversibly."

Science Daily - Dec. 4, 2015
Source - Rice University

Photo - Byers/Rice University



Electron microscope image shows silver plated gold nanoparticles. A color changing layer of silver connects the particles.



Annual EPS Membership Dues Are Due



Recent EPS Board Action - Proposed 2016 Changes

EPS 2016 Officer Positions

President: **Jann LeBleu**
 Vice President: **Dave Horton**
 Secretary: **Tom Bruno**
 Treasurer: **Kevin Riley**
 Past President: **Dave Putzier**

Competition Chair: **Mike VanDeWalker**
 Challenge Chair: **Dave Putzier**
 Critiquing Chair: **Walt Biddle, Bob Petit**
 (**Donna Gilhousen** and **Jo Eldridge**)
 Education Chair: **Monty Mattox, Tom Bruno**
 Photo Forum Chair: **Kurt Pratt**

Board Member at Large: **Graham Smith**
 Board Member at Large: **Jeff Green**
 Board Member at Large: **Mark Kelley, David Winther**

Bookkeeper: **Jonna VanDeWalker**
 Events (Field trip coordinator) : **Adrienne Adam**
 Hospitality Hostess: **Jann LeBleu**
 Librarian/Historian: **Tom Bruno**
 Newsletter: **Bruce Bittle**
 Publications: **Suzanne Eckerson**
 Webmaster: **Mike VanDeWalker**

Score 27 Aide: **Mark Gotchall & Don Hurst**
 Blog Aide: **Dave Horton**

4 C's Liaison/Representative: **Bruce Bittle**
 4 C's Image Competition Chair **Walt Biddle**



Annual EPS Membership Dues Are Due

\$1,500 To Rebuild Web Site



Web Master, **Mike VanDe Walker**, totally rebuilt the EPS web site from the ground up after a hacker recently took down our old site. You've probably noticed improvements in ease of use and common-sense organization of many sections.

The old web site was a collection of "lean-to's" so Mike used a single program to build everything anew. An outside bid for \$1,450 when compared with what Mike proposed was found not to include many of the details involved. Not the least detail was continued monitoring and on-the-spot fixes as needed at no additional charge from Mike. A BIG THANK YOU to Mike!



EPS 2016 Bylaws Changes

Effective date January 1, 2016

Photo Forum Committee (page 9)

Proposed name change from "Social Committee" and "social committee chair" to "Photo Forum Committee" and "photo forum committee chair" in text references throughout.

Proposed revised text:

"This committee shall offer an open forum for non-competitive activities that can include presentations of member-submitted images, videos, prints, as well as educational sessions, gear demonstrations and swaps, with other possible activities relating to the club and its interests. Activities will be at the committee chair's discretion."

Would replace 2015 Bylaws: "Social Meeting Committee"

"This committee shall offer an open forum and social events for members without formal competitions. Digital images, prints, and educational sessions may be offered at the chair's discretion."

Budget Committee (page 9)

Proposed revised text:

"This committee shall prepare an annual operating budget for the organization including all annually recurring organization commitments, each committee's estimated expenditures and estimated expenditures for the annual awards banquet. This budget shall be completed by September 1 of each year and presented to the board of directors for approval at the next scheduled board meeting. This operating budget shall be adopted by a majority vote of the board of directors.

"The committee will be chaired by the treasurer and include each activity night chair and one position appointed by the president.

"After the annual audit, this committee will recommend the amount of transfer of surplus funds from the prior year to the organization's reserve fund designated within the checking account to accumulate a prudent cash reserve of available funds. The amount and disposition of this reserve fund shall be determined by a majority vote of the board of directors."

Would replace 2015 Bylaws: "Budget Committee"

"This committee shall prepare an operating budget including each committee's estimated expenditures and shall recommend it to the board of directors for their approval at a board meeting prior to the end of the year. This operating budget shall be adopted by a majority vote of the board of directors. After the annual audit all or part of any surplus funds from the prior year may be transferred to a Reserve Fund within the checking account to accumulate a prudent cash reserve of available funds. The amount and disposition of this Reserve Fund shall be determined by a majority vote of the board of directors."





EPS Field Trips

Our Field Trip Coordinator for 2016 will be **Adrienne Adam** a widely traveled member of EPS who has volunteered to keep EPSers advised about about potential locations for productive field trips through the year.

Thanks to **Kathy Baker** who was in charge last year, Adrienne has inherited a long list of unused locations from which to choose each month this year for interesting and fun outings.

Suggestions are always welcome from any member who has scouted a location and considers it worthy of further inspection by an entire group.

Last year's best attended trip to the junkyard will be repeated by popular demand if so desired.

Bruce Bittle

FIELD TRIP POSSIBILITIES

JANUARY

Coast Aquarium (DT)
Newport Waterfront (DT)
Coast Lighthouses (DT)

FEBRUARY

Asian Festival (L)
Carousel Museum (DT)
Brooks Truck Museum (DT)

MARCH

Car/Boat/Antique Shows (L)

THE PERPETUAL LIST

Willamalane Parks Activities (L)
Downtown walk-around (L)
Springfield Alleys (L)
(Daytime only with partners)
Riverside Bike Paths (L)
Construction Equipment (L)
Fern Ridge Activities (L)
Frisbee Golfers, RC Sailboats at
Alton Baker Park (L)

LET US KNOW

If you have an idea or know of a good pixel freezing location.

* L = Local •DT= Day Trip •ON= Overnight

Becker Show Opens Sat. Jan. 9th

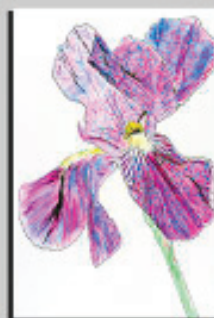
Long-time EPS member, **David Becker**, has a one person show at the O'Brien Gallery, 2833 So. Willamette, that will open Saturday, January 9th with a reception from 3-6 pm.

Show will feature David's beautiful artistically enhanced photos of a wide variety of flowers that can be seen until March 10th.

All images have a hand-crafted "Wow" factor carefully built in.



THE O'BRIEN PHOTO IMAGING GALLERY
2833 Willamette, Ste. B, Eugene, Or. 97405
Light Camera Bloom Photoshop
Art Show of Flowers By David Becker



January 9th 2016 - March 10th 2016
Opening Reception- Saturday January 9th from 3-6pm
<http://obrienimaging.com> Phone 541 729 3572
Open Weekdays, call to be sure we're open

Annual EPS Membership Dues Are Due



Q&A With Tim Grey

ASK?
tim
grey

Q: *[In Lightroom] it would be useful to rename a photo or simply append some descriptive text to a single photo, while keeping the rest of the filename in place. How is this renaming done?*

A: To start select the photo you want to rename. Then, in the Library module choose Library > Rename Photo from the menu. This will bring up the Rename Photo dialog. Click the File Naming popup and choose Edit that brings up the Filename Template Editor dialog.

In the Editor dialog choose "Filename" from the Preset popup. Then in the text box below the popup, click just to the right of the small "Filename" popup to place the insertion cursor. You can then type any text you would like to use to separate the existing filename and the new text you're going to add. For example, you might want to use a dash character here.

Next, click the Insert button to the right of the "Custom Text" label toward the bottom of the Filename Template Editor dialog. This will add a "Custom Text" field at the end of the filename you're defining.

[Now,] save it as a template. Click the Preset popup at the top of the Editor dialog and choose "Save Current Settings as New Preset." add a name for this template, click Create then Done.

You now have a template you can use to append text to the filename for any photo. While still in Rename Photo dialog, you can type the desired text in the Custom Text field, then click OK to

rename your photo.

In the future, you can add text to the name of any photo in the Library module, choosing Library > Rename Photo from the menu, then select the name of the template you saved for this purpose, add your text in Custom Text,

Q: *In training videos I see guys go from painting/editing, then immediately move the image over to edit another part. [What are the key stroke shortcuts they use?]*

A: The tricks you're looking for are actually quite simple.

In Photoshop when you're zoomed in and want to pan across the photo, simply hold the Spacebar key, then click and drag to move the image around.

In Lightroom once you're zoomed in, the Hand will be active automatically, then click and drag on the image to move around.

The Zoom tool is accessed at any time by holding Ctrl/Spacebar in Windows, or Command/Spacebar on a Mac. The plus ("+") key zooms in more, and the minus ("-") key to zoom out. Then Ctrl/0 (zero) in Windows, (Com/0 on a Mac), reduces the image back to screen size. You can also press Ctrl/Alt/0 in Windows or Com/Opt/0 on a Mac to zoom to a 100% (actual pixels) view.

I use the Spacebar shortcut for the Hand tool and the Ctrl/Com plus Spacebar shortcut for the Zoom tool.

Q: *I use blend modes in Photoshop, but the process makes the file much larger, because of copying the Background layer. Is there a way to get the same effect without making the file so big?*

A: There is a way to use blend modes without a copy of the Background layer [since] duplicating that layer will double the base file size.

The key is to use an adjustment layer in the place of a duplicate of the Background. You can use [almost] any type of adjustment layer [with] "neutral" settings, for example, a Levels or Curves adjustment layer is fine, but a Black & White adjustment layer isn't ideal.

So, add a Curves adjustment layer, make [no] changes to the controls for [that] layer, [then] change the blend mode to the desired option (Multiply, Screen, etc.). The result will be exactly the same as [a duplicate of] the Background layer, except the file size will not increase.



Tim Grey is a top educators in digital photography and imaging, offering clear guidance on complex subjects. Tim has written many books, hundreds of magazine articles and is a member of the Photoshop World Dream Team.

[Ed Note: Articles are reprinted with permission & shortened to fit space.]

Annual EPS Membership Dues Are Due



Creating landscapes with year-round appeal

A study recently reported in the October 2015 issue of *HortTechnology* used photographs of landscapes in various seasons to determine peoples' perceptions and preferences for the color and complexity of changing natural scenes.

"Plant and vegetative color changes may influence human per-

of three project sites in NY and PA.

Participants were asked to rate how much they liked the scene in each photograph and to estimate the complexity (the degree of richness or intricacy in a scene) in the photos. Computer software also computed complexity for each photograph.

"The significant and strong ef-

green and not brown.

Kuper said the results of the study can guide landscape practitioners in creating landscapes that consumers can enjoy year-round in the northeastern United States and regions with similar climates. "Environmental designers and managers should generally consider the colors that plants and



Example photographs depict winter dormant, spring foliated, summer flowering, and fall senescent in Pennsylvania

ception and affect preference ratings ..." says Rob Kuper, from the Dept. of Landscape Architecture at Temple University,

Kuper explained that perceptual colors (landscapes containing variations of reds, greens, and blues) affecting consumers' landscape preferences has practical implications. "Plant growers, scientists, designers, and installers can benefit from understanding and predicting whether people prefer landscapes containing categorical colors, perceptual colors, or neither."

Kuper's study involved 48 color photographs depicting four seasons of plant growth -- at four locations on each

effect on preference ratings implies that participants' perceptions may have been affected by the plant and vegetative visual changes that were depicted between the photographs," the author said. Results also suggested that participants might have liked depictions of winter dormancy and senescent plants considerably less than those of foliated landscapes. Preferences for flowering scenes were not significantly different from those for foliated scenes. Measures of complexity were not significantly different between foliated scenes and dormant, flowering, and senescent scenes. Overall, Kuper noted, respondents generally liked scenes that were

vegetation display during foliation, flowering, senescence, and dormancy," he said. "For example, using evergreen trees and shrubs in landscapes could help consumers' preferences hold steady rather than drop during winter."

Kuper added that using plants that produce colorful berries or stems may further bolster preference and perceptual color information though, "likely not to the same degree as evergreen plants." Plants that emerge from winter dormancy early and enter winter dormancy later than other plants could also help to extend high preference ratings, he said.

Science Daily - Jan. 2, 2016



Annual EPS Membership Dues Are Due

An EPS
Preferred
Vendor

U of O Bookstore Art Department

Corner of 13th Ave. & Alder St.
20% discount on all art supplies



What To Know

January 2016

- 5 Challenge Night - Theme "FOOD"
- 12 Ed. Night, TBA
- 19 Print & Digital Competition night
- 26 Photo Forum Night, Q & A, Demos

February 2016

- 2 Challenge Night - Theme TBA Jan 5
- 9 Ed. Night, TBA
- 16 Print & Digital Competition night
- 23 Photo Forum Night, Q & A, Demos

March 2016

- 1 Challenge Night - Theme TBA Feb 2
- 8 Ed. Night, TBA
- 15 Print & Digital Competition night
- 22 Photo Forum Night, Q & A, Demos

April 2016

- 5 Challenge Night - Theme TBA Mar 1
- 12 Ed. Night, TBA
- 19 Print & Digital Competition night
- 26 Photo Forum Night, Q & A, Demos

May 2016

- 3 Challenge Night - Theme TBA Apr 5
- 10 Ed. Night, TBA
- 17 Print & Digital Competition night
- 24 Photo Forum Night, Q & A, Demos

June 2016

- 7 Challenge Night - Theme TBA May 3
- 14 Ed. Night, TBA
- 21 Print & Digital Competition night
- 28 Photo Forum Night, Q & A, Demos

Where To Go

• David Becker-

Will have a one person show in the O'Brien Photo Imaging Gallery at 2833 Willamette St. from January 9th – March 10th. A show opening reception will be held Saturday Jan. 9th from 3 – 6 pm. (See page 5 for promotional poster.)

• Carmen Bailey -

Will have photographs on exhibit at: *Growler Underground*, 521 Main Street, in Springfield. The photos will be up until the beginning of February.

Got a show?

Have images published?
We want to know!

Send complete details
<bittled70@gmail.com>

NEW EPS PRICES

BEGINNING JAN. 1, 2016

ALL FRAMES \$16

ALL DOUBLE WHITE

MATS \$7

NO CHANGE FOR

BLACK CORE MATS - \$14

TRANSPORT BOXES - \$5

Classified

Classified Ads
Free to all
EPS members

This
Space
Available

NEW PRICES

EPS WHOLESALE print show supplies

\$7 MATS (16"x 20" OD).
Double whites, acid-free
surfaces with stiff backers.
Center-cut with 10"x 15"
or 12"x 16" openings.

\$14 WHITE MATS BLACK CORE
Available only with 10"x 15"
center-cut opening.

\$16 FRAMES (16"x 20" OD).
Black or Silver aluminum,
with hardware & glass.

\$5 TRANSPORT BOXES
for framed images.
(some assembly req.)

\$2 from each mat, frame
or box purchase
goes to EPS.

Contact:
Bruce Bittle
541.343.2386

Legal Stuff

The Bellows is published ten times per year by the *Emerald Photographic Society*, a not-for-profit organization, and is completely supported by EPS funds. All materials within do not necessarily reflect the views of the EPS Board of Directors, officers, membership, supporting vendors or editor of this publication. All brand and product names listed are trademarked and/or registered and are not necessarily endorsed by EPS. However, EPS

does endorse vendors, offering discounts to our members, listed on the last page (randomly as space allows on other pages) of each issue.

The Bellows policy is to always adequately attribute all images & posted content. *The Bellows* can not be responsible for images or any other content acquired from unidentified web pages with no visible attribution or on-line contact information.

Reprinting articles from *The Bellows* for non-commercial use is permitted so long

as the photo or article is not copyrighted and source credit is given to EPS, the author and this newsletter. Any other reproduction requires specific written permission from the editor.

Inquiries about, or submissions for *The Bellows* (deadline is the last week of the month for following month publication) send to Editor, c/o Emerald Photographic Society, 1236 Debrick Rd., Eugene, OR 97401, or by email <bittled70@gmail.com>





EPS Preferred Vendors



Show your membership card to these vendors for nice discounts.
Be a good ambassador for EPS each time you receive these discounts
by letting these folks know how much you appreciate their support.



Dotson's Camera Store

1668 South Willamette Street

15% Discounts on in-house processing (including slide processing)

*Your camera's home
away from home*

Focal Point Photography

161 West Ellendale, Dallas, OR

Equipment Rentals, Trade Ins, discounts on most items Call Mike Lowery, 503.623.6300

Oregon Gallery

199 East Fifth Avenue, Eugene

15% discount on all matting and framing

***The Shutterbug* Camera Stores**

Two Stores 207 Coburg Rd. & Valley River Center

10% discount on photo accessories and photo finishing

U of O Bookstore Art Department (Basement)

Corner of 13th Ave. & Alder St.

20% discount on all art supplies

Vistra Gallery

160 East Broadway, Eugene

20% discount on printing, matting & framing, Up to 30% on orders over \$500