

Feb
2018

The BELLOWS

An anniversary day of protest and support

Many EPSers Document Women's March

Photos
by
Ron
Sequin



More Eugene Women's March photos on next page.

Annual EPS Banquet - Saturday Feb. 24th

Who was best EPS 2017 shooter?
Who took THE best 2017 shot?
Who took the best Nature shot?
Who took the best People shot?

Who took the best Pictorial shot?
Who took the best Ab/Ex shot?
Who won \$100 from the Raffle?
Who won the other \$100 bucks?

Over \$1,000
in Awards
Certificates
to Winners

MARK THE DATE ON YOUR CALENDAR

What to bring for the potluck dinner?

THE CHOICE IS UP TO YOU!

- Your Favorite Hot Dish
- Your Favorite Salad
- * Your Favorite Dessert

BRING A FRIEND or FAMILY

BE PREPARED TO HAVE FUN!

(Will Wayne Harrison bring his delicious Hot Dog casserole in a bigger pot this year??)

Inside This Issue

• More Eugene Women's March photos	2
• Club News - Junk Yard - Wildlife - Grist Mill	3
• EPS Winners at Fall NPPNW	4
• Becker Images at several judged shows	5
• 4Cs Monthly EID - Jan. Winning Images	6
• Tim Grey Q&A - Ltrm Mask - CC Upgrade	7
• What to Know - Where To Go - Classifieds	8



Eugene Women's March 2018



Photos by Ron Seguin



Light is your subject – Color is your partner

EPS Club News

But, Lady Luck will sometimes be your best buddy

Feb. Field Trip

A Feburary Field Trip is planned for Saturday the 10th to the Ridgefield Wildlife Refuge near Ridgefield, WA, then on to the Cedar Creek Grist Mill in the same locale.

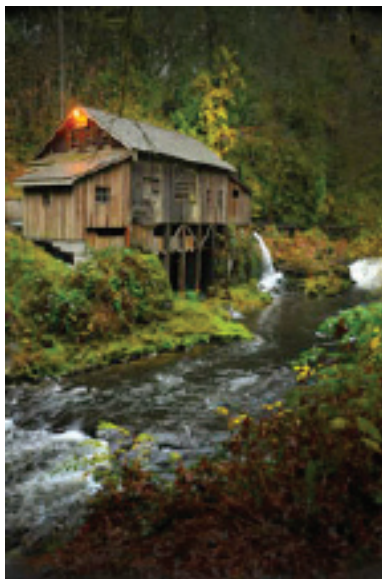
We will probably be at the wildlife refuge a little early for the peak bird migration and for any foliage on the trees at the Grist Mill (picture at right was taken in the fall).

This is a rather impromptu trip because several of us who have been on this trip multiple times, have never seen the mill at this time of year.

If "first-timers" would prefer to wait and shoot it at a more prime time you are still in luck. We have a detailed map that will have all info needed to do this trip on your own anytime you'd like.

The Ridgefield WR has a two mile loop drive that will easily take a minimum of an hour or more. (All depends if Lady Luck is riding with you). Ridgefield is fourteen miles north of the Columbia River on I-5.

The grist mill is seven miles farther North to Woodland, then fifteen



miles east from the freeway on Cedar Creek Rd.

The mill still operates on summer weekends and is adjacent to a picturesque, open-structure covered bridge. (Hint: EPS has never seen a panno shot of both the bridge and mill in our competition).

The map will be available at the next two meetings.

Ron Seguin, FT Leader –



EPS Dues Are Past Due

2018 Board of Directors & Support Positions

Board of Directors

Dave Horton - President
Stephen Franzen - Vice President
Linda Magyary - Secretary
Kevin Reilly - Treasurer
David Putzier - Past President
Mike Van De Walker - Webmaster
Jim (or Sue) Mehrwein, Graham Smith, & David Winther – Members at large

**BOARD MEETS
on 5th Thursdays
(Four times this year)**

Support Positions*

Hernando Convers, Mark Gotchall
Competition Co-Chairs
Susan Starr, Jon Parker
Education Co-Chairs
Rochelle Villanueva, Kevin Reilly
Photo Forum Co-Chair
Jim Buch - Critiquing Chair
VACANT – Field Trip Coordinator
Suzanne Eckerson – Publications
Tom Bruno – Library - Historian
Bruce Bittle – Newsletter Editor & Columbia Council Representative

* Nonvoting positions



2018 EPS Field Trips

We need a volunteer for Chair as Field Trip Coordinator.

• PLANNED TRIPS •

Field Trip leader **Dave Horton**
Saturday, February 3

9 - 12 noon Rain or shine

Location:

Springfield Auto Recyclers
750 West 28th Street Springfield
East on Main St. to 28th St.
Turn right across RR tracks

Unique – Antique

Nothing rusty turned away.

\$5 (cash) donation

Models welcome

Dress code – **Junk Yard Proof**
(boots recommended)

May 25-27 – Palouse Trip

Three days in Eastern WA. Leader - Bruce Bittle. **TRIP FULL** (Unless you have a trailer or RV.)

July 27-29 – Northwest Trek & Mt. Rainier Trip. Three days for steam train, wildflowers & wildlife refuge near Eatonville, WA. Leader – Bruce Bittle. **TRIP FULL**

FEBUARY SUGGESTIONS FOR SELF-GUIDED TRIPS

• The new building for the **Albany Carousel Museum** has been finished and is now open weekdays 10 am to 4 pm, weekends 10 - 6.

• The **Antique Automobile & Airplane Museum (WAAAM)** in Hood River is well worth a day trip up the Columbia.

**ANY EPS MEMBER
Can organize a Field Trip
at any time for any place.
Make an announcement.**

**Make a map.
Make it happen!**





EPSers Winning Images At Fall NPPNW



1st Place – Scenic
"Howling Dog Rock, Bandon"
Alex Morley



1st-Place – Peoples Choice, Plants
"Maidenhair-Fern" **Walt Biddle**
(The first metal print to be entered
in this competition.)



1st-Place – Plant-Life
"Milkweed in Black & White"
Mike VanDeWalker

The Nature Photographers of the Pacific Northwest meet two times each year for a one-day photo event you don't want to miss.



2nd Place – Scenic
"Autumn In The Park"
Mike VanDeWalker



3rd Place – Wildlife
"Common Murres"
by **Alex Morley**



2nd-Place – Wildlife
"Wild Horses Fighting"
by **Bob Petit**



David Becker Images In Juried Shows On West Coast



ere are some art shows that David has had individual images accepted to be displayed

recently, or will soon be showing, around the state. \$4000 of prize money is offered somewhere in all of this.

December – “small work - BIG TALENT,” Laguna, CA
January 16 to February 22 – “WILL WOMEN 2018” at the River Gallery 184 So. Main St., Independence OR.
April 6, 2018 – “CASCADIA” Crossroads Art Center Baker City. This show opens here, then the exhibit will travel to:
May 2018* – The Dalles Public Library in and to
July 2018 * – “Oregon State University,” Corvallis
* Opening date TBA



This shot was taken at last year's junk yard field trip. Really!

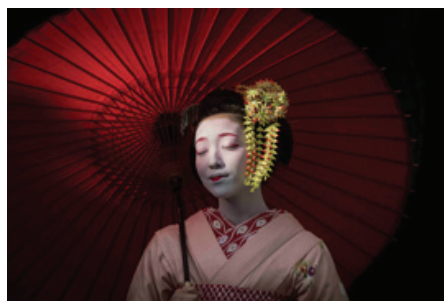


Shot with cell phone in daylight. Processed on an iPad.





4Cs *Digital Winning Images For January*



Entries are from 21 competing camera clubs in OR, WA, ID.
(EPS does not compete.)





Q & A With Tim Grey

ASK?
tim
grey

Q:

Is it possible to mask out a logo in Lightroom similar to what [can be done] in Photoshop?

A:

You can't perform the masking work in Lightroom [as it] does not have any masking feature. So you need to perform the actual masking work in Photoshop.

However, you can employ a [previously Photoshop] masked logo, [for example], as a watermark in Lightroom for a variety of sharing methods.

Q:

In Elements when feathering a layer mask, I go to Select > Refine Edge and find the Feather slider along with several others, (Radius, Smooth, Contrast, Shift Edge, etc.). [What do these] other sliders do?

A:

In many cases the Feather slider [works fine], but there are some other options you might want to consider.

In many cases, simply applying a Filter > Blur > Gaussian Blur to a layer mask can provide the feathering you need to ensure the area blends in smoothly with the areas that are not being adjusted.

The Refine Edge command provides ways to fine-tune a layer mask. Of particular note are two options. First, the Shift Edge slider enables you to "push" or "pull" the edge of the mask toward or away from the original

position. Essentially a process of growing or shrinking the layer mask to help match it up with the targeted area.

Second the Contrast slider reduces the degree of feathering for a mask, and the Smooth slider enables you to smooth out jagged edges. These are much less frequently [needed] than the other controls noted above.

Finally, the Refine Selection Brush tool can prove very helpful for creating selections that don't need much refinement at all. This tool is especially helpful for creating selections for fuzzy areas, such as furry animals.

Q:

When Lightroom and Camera Raw update their process versions, as they have recently, do you go back to any of your existing images and re-edit them with the new process version?

A:

No, generally I don't unless I want to revisit the adjustments I previously applied. The main reason to update the version for an "older" photo is to take advantage of new features available. Sometimes that's compelling, of course, depending on the new features.

When changing the process version for an image, there's a risk that the image will change in appearance. This is reason enough not to batch update images to a new process version. Instead I recommend updating only when revisiting [previously] adjusted older photos.

Any new images you import into your catalog will, [of course], automatically be updated to reflect the new ver-

sion processes.

To change [previously] processed photos, use the Process popup in the Camera Calibration section of the right panel in the Develop module. It will show a lightning bolt symbol in the Histogram section of the Develop module. Clicking that lightning bolt brings up a dialog with options for updating a [previous] version or for all images currently shown on the filmstrip.

Q:

I have Lightroom 5 and still not too efficient with it. What advantages would I gain if I purchase Lightroom CC?

A:

[First] choose between the Classic CC (version 6) with a "perpetual" license (no updates) or subscribe to the new monthly Creative Cloud plan that includes [continuous] updates.

There are new features included in Classic CC (6) not in version 5, but [if you're] using Lightroom to manage workflow, the Lightroom Creative Cloud version [has too many] features still missing and does not yet provide adequate workflow solutions for most photographers.



Tim Grey publishes the monthly on-line magazine PIXOLOGY and is a top educator in digital photography offering clear guidance on complex photo subjects. He is also a Photoshop World Dream Team member.

[Ed Note: Tim's articles are reprinted with permission & abridged to fit available space.]



What To Know

February 2018

- 1 Challenge Night - Theme "WORN"
- 8 Ed. Night, TBA
- 15 Print & Digital Competition night
- 22 Photo Forum Night, Q & A, Demo

March 2018

- 1 Challenge Night - Theme TBA Feb. 1
- 8 Ed. Night, TBA
- 15 Print & Digital Competition night
- 22 Photo Forum Night, Q & A, Demo

April 2018

- 5 Challenge Night - Theme TBA Mar. 1
- 12 Ed. Night, TBA
- 19 Print & Digital Competition night
- 26 Photo Forum Night, Q & A, Demo

May 2018

- 3 Challenge Night - Theme TBA Apr 5
- 10 Ed. Night, TBA
- 17 Print & Digital Competition night
- 24 Photo Forum Night, Q & A, Demo

June 2018

- 7 Challenge Night - Theme TBA May 3
- 14 Ed. Night, TBA
- 21 Print & Digital Competition night
- 28 Photo Forum Night, Q & A, Demo

No meetings July - August

September 2018

- 6 Challenge Night - Theme TBA June 7
- 13 Ed. Night, TBA
- 20 Print & Digital Competition night
- 27 Photo Forum Night, Q & A, Demo

October 2018

- 4 Night - Theme TBA Sept. 6
- 11 Ed. Night, TBA
- 18 Print & Digital Competition night
- 25 Photo Forum Night, Q & A, Demo

Where To Go

• At the Courthouse

No EPS Print Shows at this location until May. We agree to share a few months with other nonmembers.

If you have a show anywhere else in the Eugene / Springfield (or anywhere else) during the next three months let us know.

• A Free Software Heads-up from Walt Biddle

Darktable - is a new open-source, (free), Lightroom wannabe available for Windows and Macs that allows image organization and non-destructive raw processing, just the same as in Lightroom.

The only work-around left in the Windows version is that you are required to use only ASCII characters

Got a show? We want to know!

Have your photos
been published?

- Magazines
- Brochures
- Newspapers
- Scientific Journals

Send complete details to:
<bittled70@gmail.com>

*"If you don't blow your own horn,
somebody else will use it
for a spittoon."*

Classified

This
Space
Available

**Classified Ads
Free to all
EPS members**

BEST PRICES in town EPS WHOLESALE print show supplies

\$17 FRAMES (16"x 20" OD)

Black or Silver aluminum,
with hardware & glass

\$7 MATS (16"x 20" OD)

Double whites, acid-free
surfaces with stiff backers
Center-cut with 10"x 15"
or 12"x 16" openings

\$14 WHITE MATS BLACK CORE

Available only with 10"x 15"

\$5 TRANSPORT BOXES

for framed images
(some assembly req.)

**\$2 from each mat, frame
or box purchase
goes to EPS**

Contact:

Bruce Bittle 541.343.2386

FREE Delivery to club meetings!

Legal Stuff

The Bellows is published ten times per year by the *Emerald Photographic Society*, a not-for-profit organization, and is completely supported by EPS funds. All materials within do not necessarily reflect the views of the EPS Board of Directors, officers, membership, supporting vendors or editor of this publication. All brand and product names listed are trademarked and/or registered and are not necessarily endorsed by EPS. However, EPS

does endorse vendors, offering discounts to our members, listed on the last page (randomly as space allows on other pages) of each issue.

The Bellows policy is to always adequately attribute all images & posted content. **The Bellows** can not be responsible for images or any other content acquired from unidentified web pages with no visible attribution or on-line contact information.

Reprinting articles from **The Bellows** for non-commercial use is permitted so long

as the photo or article is not copyrighted and source credit is given to EPS, the author and this newsletter. Any other reproduction requires specific written permission from the editor.

Inquiries about, or submissions for **The Bellows** (deadline is the last week of the month for following month publication) send to Editor, c/o Emerald Photographic Society, 1236 Debrick Rd., Eugene, OR 97401, or by email <bittled70@gmail.com>



EPS Preferred Vendors



Show your membership card to these vendors for nice discounts.
Be a good ambassador for EPS each time you receive these discounts
by letting these folks know how much you appreciate their support.



Dotson's Camera Store

1668 South Willamette Street

15% Discounts on in-house processing (including slide processing)

*Your camera's home
away from home*

Focal Point Photography

161 West Ellendale, Dallas, OR

Equipment Rentals, Trade Ins, discounts on most items Call Mike Lowery, 503.623.6300

Oregon Gallery

199 East Fifth Avenue, Eugene

15% discount on all matting and framing

Red River Paper

Professional quality papers of all types for much less than printer mfg. brands

10% rebate to EPS when ordered directly from our web site

***The Shutterbug* Camera Stores**

Two Stores 207 Coburg Rd. & Valley River Center

10% discount on photo accessories and photo finishing

NEW

TechMedic

EPS Preferred Vendor

Apple Mac Computer Technicians

2125 W. 7th Ave (Big "Y" Center)

541•484•3603

NEW

U of O Bookstore Art Department (Basement)

Corner of 13th Ave. & Alder St.

20% discount on all art supplies

Web Mats & Frames / Vistra Gallery

411 West 4th Street, Eugene

20% discount on printing, matting & framing, Up to 30% on orders over \$500