

Apr  
2018

# The BELLOWS

*Local marchers extend national influence for gun control*

## EPSers Cover– March For Our Lives



Photos – Walt Biddle Also shooting - Graham Smith, Ron Seguin

*A Mark Fitzgerald day-long Lightroom presentation*

## “Bland to Grand,” Workshop - Sat. the 21st

**When:** Saturday, April 21 from 9am to 4pm

**Where:** Northwood Christian Church, 2425 Harvest lane, Springfield.

In this one-day workshop Mark will follow last month's Ed Night meeting by showing how to use the tools in Lightroom's Develop module to craft award-winning images.

He will begin with showing you how to perfect global qualities like tone and color and then drill down into advanced techniques for local adjustments using gradients, the adjustment brush, and more. He will also share his secret to getting just the right amount of sharpness and how to easily create a digital mat using Lightroom. Mark has years of experience teaching photographers and judges what it takes to identify and produce a winning image. By the end of the day you will be ready to begin taking your images to the next level.

**Cost:** \$100 with half going to Emerald Photographic Society as a fundraiser.

**Bring** your laptop computer with Lightroom or Photoshop installed.

Images for processing and instruction, but you are also welcome to bring your own.

**RSVP to Dave Horton**

**dhorton11@gmail.com**



### Inside This Issue

- |  |   |
|--|---|
| • Club News - Finley Time - Call for entries | 2 |
| • NPPNW Spring Meet - Saturday April 7th     | 3 |
| • 4Cs Winning Digital Images - February      | 4 |
| • 4Cs Winning Digital Images - March         | 5 |
| • BIG NOSE Selfies - Smaller, faster chips   | 6 |
| • Tim Grey Q&A - Ltrm. Bug - iPhone pan      | 7 |
| • What to Know - Where To Go - Classifieds   | 8 |



Light is your subject – Color is your partner

## EPS Club News

But, Lady Luck will sometimes be your best buddy

### 2018 Call for Entries 4Cs Recorded Show Competition

It's the time to be thinking about assembling your recorded shows for the annual 4Cs Recorded Show Competition for 2018. Entries will be posted on the Vimeo streaming website and the winners shown at the October 2018 4Cs Convention in North Bend, Oregon.

Click here [2017ShowLinks.pdf](#) for links and the password to view last year's entries, and Click here [Entry Rules and Guidelines](#) for Entry Rules and Guidelines. These files may also be downloaded from the Recorded Shows document folder on the 4Cs website. <https://goo.gl/eq3Txu>

Digital Scrapbook will be judged 70 points on photography, 15 points on production values, and 15 points on originality. All other programs will be judged 40 points on photography, a total of 45 points on production values, and 15 points on originality. Shows must score at least 60 points out of 100 to be considered for an award.

**Deadline for entries is Wednesday, September 4, 2018**

All entries must be in the MP4 format to simplify playback and distribution of shows to judges. Shows and Entry Forms may be submitted electronically using services such as Dropbox, OneDrive, WeTransfer, or similar services. Make sure you allow time for mail delivery. Be advised, thumb-drives will not be returned. See Entry Rules and Guidelines for more submission details.

**John Craig, Recorded Show Chair, [jccraigret@gmail.com](mailto:jccraigret@gmail.com)**



### 2018 EPS Field Trips

**We need a volunteer for Chair  
as Field Trip Coordinator.**

• **PLANNED TRIPS** •

#### This month is Finley Wildlife Refuge time

Beginning the second week of this month the feathered migrants will be moving back to the Bruce Rd. wetlands at the south end of the refuge. This is a hot spot for: Red winged blackbirds - Pied billed grebes - Cinnamon teal, Shoveler, Mallard, Coots, and Pintail ducks - a Harrier and Kestrel have already arrived. Soon to be expected are: Virginia rails - Soras - Bitterns - Yellow headed blackbirds - & assorted LBJs\*.

Five miles north of Monroe on Hwy. 99 West, turn left onto Bruce Rd. at the country store and follow the signs.

\*Little Brown Jobs



### 2018 Board of Directors & Support Positions

#### Board of Directors

**Dave Horton - President**  
**Stephen Franzen - Vice President**  
**Linda Magyary - Secretary**  
**Kevin Reilly - Treasurer**  
**David Putzier - Past President**  
**Mike Van De Walker - Webmaster**  
**Jim (or Sue) Mehrwein, Graham Smith, & David Winther - Members at large**

**BOARD MEETS  
on 5th Thursdays  
(Four times each year)**

#### Support Positions\*

**Hernando Convers, Mark Gotchall**  
*Competition Co-Chairs*  
**Susan Starr, Jon Parker**  
*Education Co-Chairs*  
**Rochelle Villanueva, Kevin Reilly**  
*Photo Forum Co-Chairs*  
**Jim Buch - Critiquing Chair**  
**VACANT - Field Trip Coordinator**  
**Suzanne Eckerson - Publications**  
**Tom Bruno - Library - Historian**  
**Bruce Bittle - Newsletter Editor & Columbia Council Representative**

\* Nonvoting positions

#### SUGGESTIONS

##### FOR SELF-GUIDED TRIPS

• The new building for the **Albany Carousel Museum** has been finished and is now open weekdays 10 am to 4 pm, weekends 10 - 6.

• The **Antique Automobile & Airplane Museum (WAAAM)** in Hood River is well worth a day trip up the Columbia.

**ANY EPS MEMBER  
Can organize a Field Trip  
at any time for any place.  
Make an announcement.  
Make a map.  
Make it happen!**







NATURE PHOTOGRAPHERS  
**NPPNW**  
OF THE PACIFIC NORTHWEST

**The 2018 Spring meeting, Saturday, April 7**  
McGuire Auditorium at Warner Pacific College in Portland, OR  
Doors at 8:30 a.m. – Program begins 10:00 a.m

**Speaker – Jack Graham sponsored by Fuji-Film.** [www.jackgrahamphoto.com](http://www.jackgrahamphoto.com).  
Landscape & Nature photographer – Workshop leader – Author – 25 years experience.  
A Fuji X-Photographer & contributor to *Landscape Photography & Outdoor Photographer*  
**Presentations**

*“Use Depth & Perspective to Create Emotion in Your Images”*  
*“Becoming an Artist, Not Just a Photographer”*      *“Purpose Driven Travel”*

**Digital projected & Print competitions**

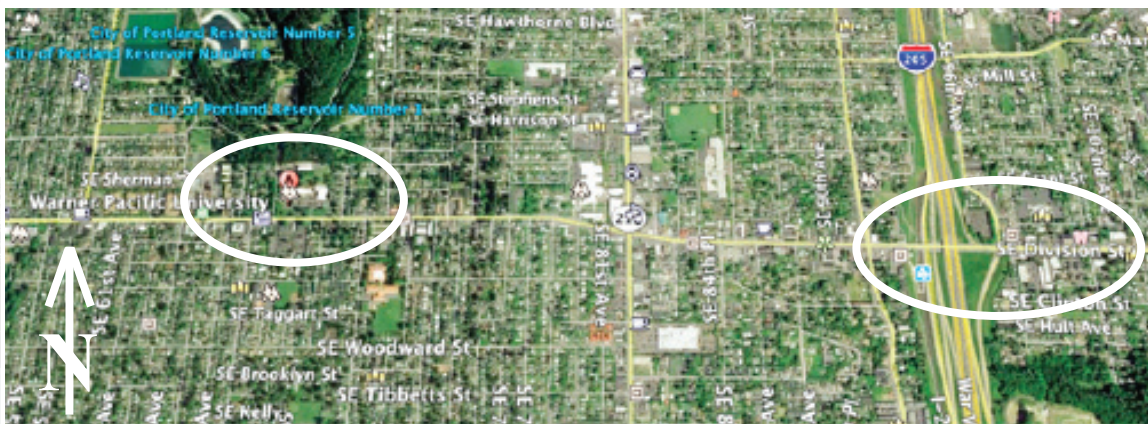
We use a “limited hand of man” rule  
(Man-made objects should not be a major portion of the image)  
You must be registered to submit images for competition

**Categories: Plant Life – Scenic – Wildlife**

**PRINT SUBMISSIONS** (Too late for Digital submissions)

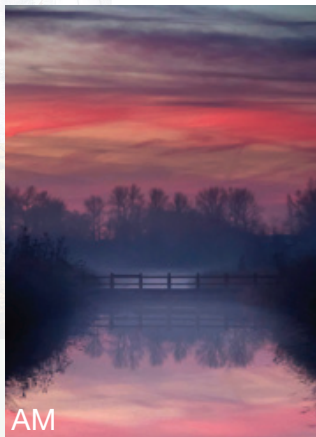
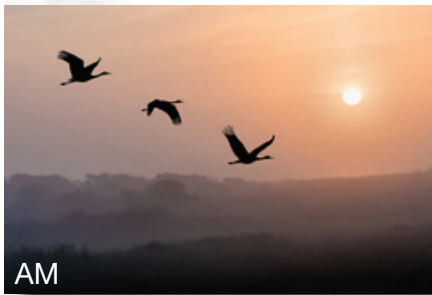
**Must be submitted in person** ID - ON BACK, (Your name - Category - Title - Email & Phone)  
Size limited to 16x20 in. (with or without mat)

**MAP TO WARNER PACIFIC COLLEGE**



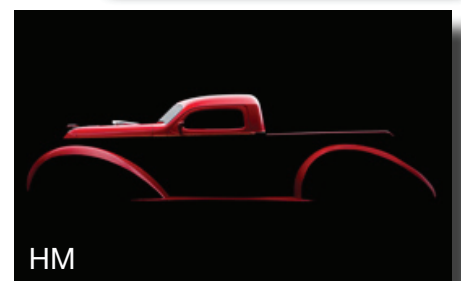
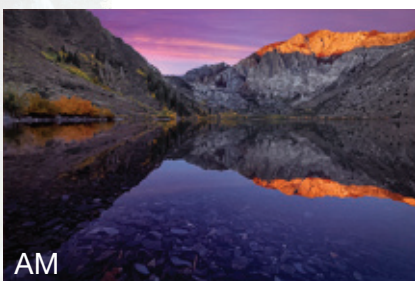
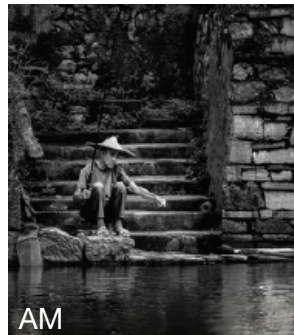
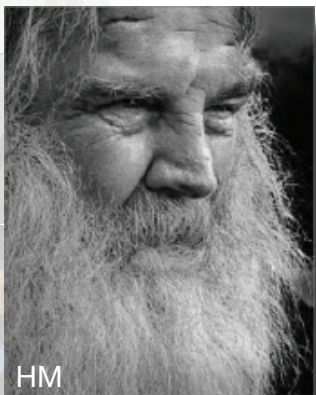


# 4Cs February Monthly Winning Digital Images



AM = Award of Merit  
HM = Honorable Mention

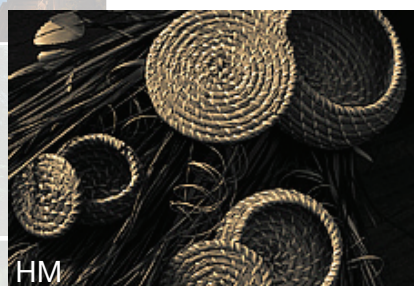
EPS does not enter this competition.







## 4Cs March Monthly Winning Digital Images



AM = Award of Merit  
HM = Honorable Mention

EPS does not enter  
this competition.





# “Selfies,” Making World Noses Look *FAT*

**D**oes my smartphone make my nose look big? Researchers develop new mathematical model to explain how smartphones act as “portable fun-house mirrors.”

People take billions of selfies every day without realizing the distortion effects of the camera’s close proximity, prompting many to develop a negative self image.

Boris Paskhover, an assistant professor at Rutgers Medical School, specializing in facial plastic and reconstructive surgery, frequently was shown selfies as examples of why patients were requesting surgery to make their noses smaller.

How selfies drive people’s self-image is a public health issue, Paskhover said. The American Academy of Facial



Photo: Boris Paskhover

A) Selfie at 12 inches

B) Portrait at 60 inches

Plastic and Reconstructive Surgeons reports that 55 percent of surgeons say people come to them seeking cosmetic procedures because of selfie photos.

An article published in JAMA, Facial Plastic Surgery, shows by using a mathematical model that an average selfie, taken 12 inches from the face, makes the nasal base appear 30

percent wider and the nasal tip 7 percent wider than if the photograph had been taken at 5 feet, a standard portrait distance.

Dr. Paskhover now has a better way to tell patients why they cannot use selfies to evaluate their nose size.

*Science News – March 1, 2018*  
Rutgers University



# Smaller, Faster Terahertz Chip Now Within Reach

Following three years of extensive research, physicists have created technology that will enable computers — and all optic communication devices — to run 100 times faster through terahertz microchips.

Until now, two major challenges stood in the way of creating the terahertz microchip: overheating and scalability, making them unreliable and difficult to replicate in large quantities.. However, Hebrew University of Jerusalem researchers, led by Dr. Uriel Levy have shown proof of concept for

technology that integrates the speed of optic (light) communications with the reliability -- and manufacturing scalability -- of electronics.

Levy and his team have come up with a new integrated circuit that uses flash memory technology -- the kind used in flash drives -- in microchips. If successful, this technology will enable standard 8-16 gigahertz computers to run 100 times faster and will bring all optic devices closer to the holy grail of communications: the terahertz chip.

As Dr. Uriel Levy shared, “this

discovery could help fill the ‘THz gap’ and create new and more powerful wireless devices that could transmit data at significantly higher speeds than currently possible. In the world of hi-tech advances, this is game-changing technology,”

“It will now be possible to manufacture any optical device with the precision and cost-effectiveness of flash technology.” Coming soon to a chip near you!

*Science Daily, March 25, 2018*  
Hebrew Univ. of Jerusalem



An EPS  
Preferred  
Vendor

## U of O Bookstore Art Department

Corner of 13th Ave. & Alder St.  
**20% discount on all art supplies**





## Q & A With Tim Grey

ASK?  
tim  
grey

**Q:** *If you cancel your Adobe Creative Cloud subscription, then several months later want to renew it, will you be charged for the intervening time?*

**A:** No. Be sure you have all of your data stored locally before canceling.

It is important to keep in mind, if you are using the synchronization features (i.e. Lightroom CC for mobile devices, or the cloud-synchronization service with Lightroom on a desktop), the synchronized images and galleries will no longer be available once you cancel. Note: *[You may]* continue using Lightroom Classic CC after canceling Creative Cloud. Just certain features (such as the Develop and Map modules) will no longer function.

If you restart Creative Cloud later, the *[new]* subscription rate may be higher but you would not have to pay for inactive time. If you properly saved all of your photos and data locally, you will be able to essentially pick up right where you left off managing your photos.

**Q:** *The iPhone always wants me to pan from left-to-right. Is there any way to pan from right-to-left?*

**A:** Absolutely. Just tap the arrow to *[flip it for]* right-to-left panning. There *[is a second]* feature I find many photographers are not aware of.

You are not limited to horizontal, you can also capture vertically. *[Just]* rotate the iPhone 90-degrees for *[a vertical]* capture. *[Then]*, as needed, tap the arrow to switch between panning from bottom to top, or vice versa.

**Q:** *I'm using Lightroom Classic on an iPhone and some movies and live views are imported either sideways or upside down! What's happening and how can I fix this?*

**A:** This is (as far as I can tell) a bug in Lightroom. The videos are not actually upside-down, but you can make sure Lightroom doesn't get confused by always capturing iPhone (or iPad) videos with the "home" button to the right (volume buttons on the bottom).

As you already know, *[iPhone]* cameras include a sensor to detect photo orientation so they can be automatically rotated to the correct orientation when viewed on your computer. There is *[a bug]* issue with Lightroom not correctly orienting video captures with iPhones and iPads. If you open that video with your default video player, you'll find that it plays correctly. It only appears upside-down when the video is rendered by Lightroom in formats (DPS or H.264) after export.

It is only videos that are captured with the "home" button to the left with volume buttons *[on top]*, that have this problem. Of course, that makes it more difficult to use the volume buttons for a shutter release, which is rather inconvenient. So hopefully Adobe will resolve this issue in Lightroom soon.

**Q:** *What is "focus peaking", and why would I want this feature on a digital camera?*

**A:** Focus peaking displays an image on a camera's electronic viewfinder *[boldly]* highlighting areas of a scene that are in focus. This can be helpful for fine-tuning focus for either video or still photography.

Focus-Peaking *[FP]* has been common in video as it keeps a subject in focus even as it gets closer or further away. Much easier than visually evaluating through the viewfinder.

*[FP]* can certainly help still photography especially in tricky low lighting conditions, when it's *[always]* difficult to *[see]* what's in focus. *[Also, for scenes that demand a shallow depth of field]*. *[Lastly]*, many photographers with less than perfect vision find *[FP]* to be an excellent primary tool.

Any photographer who has never seen or used focus peaking try it out and get a sense of whether this feature *[would be]* helpful enough to add to the list of "must have" features for that next camera purchase.



*Tim Grey publishes the monthly on-line magazine PIXOLOGY and is a top educator in digital photography offering clear guidance on complex photo subjects. He is also a Photoshop World Dream Team member.*

*[Ed Note: Tim's articles are reprinted with permission & abridged to fit available space.]*



## What To Know

### April 2018

- 5 Challenge Night - "Dreamy - High Key
- 12 Ed. Night, **TBA**
- 19 Print & Digital Competition night
- 26 Photo Forum Night, Q & A, Demo

### May 2018

- 3 Challenge Night - Theme TBA Apr. 5
- 10 Ed. Night, **TBA**
- 17 Print & Digital Competition night
- 24 Photo Forum Night, Q & A, Demo

### June 2018

- 7 Challenge Night - Theme TBA May 3
- 14 Ed. Night, **TBA**
- 21 Print & Digital Competition night
- 28 Photo Forum Night, Q & A, Demo

### No meetings July - August

### September 2018

- 6 Challenge Night - Theme TBA June 7
- 13 Ed. Night, **TBA**
- 20 Print & Digital Competition night
- 27 Photo Forum Night, Q & A, Demo

### October 2018

- 4 Challenge Night - Theme TBA Sept. 6
- 11 Ed. Night, **TBA**
- 18 Print & Digital Competition night
- 25 Photo Forum Night, Q & A, Demo

### November 2018

- 1 Challenge Night - Theme TBA Oct. 4
- 8 Ed. Night, **TBA**
- 15 Print & Digital Competition night
- 29 Photo Forum Night, Q & A, Demo

### December 2018

- 6 Challenge Night - Theme TBA Nov 1
- 13 Ed. Night, **TBA**

**Only Two Meetings  
this month**

## Where To Go

### • At the Courthouse

No EPS Print Shows at this location until May. We agree to share a few months with other nonmembers.

If you have a show anywhere else in the Eugene / Springfield (or anywhere else) during the next three months let us know.

### • Several EPSers had images in the McKenzie River Show at the Hult this last month.

Helen Fast was the only EPSer to send a note to The Bellows saying that she had images selected. Several folks reported that the show was outstanding with the music combined. Apparently the show was recorded so if someone receives a copy bring it to one of our meetings.

### Got a show? We want to know!

Have your photos  
been published?

- Magazines
- Brochures
- Newspapers
- Scientific Journals

Send complete details to:  
<bittled70@gmail.com>

*"If you don't blow your own horn,  
somebody else will use it  
for a spittoon."*

## Classified

This  
Space  
Available

**Classified Ads  
Free to all  
EPS members**

### BEST PRICES in town EPS WHOLESALE print show supplies

#### \$17 FRAMES (16"x 20" OD)

Black or Silver aluminum,  
with hardware & glass

#### \$7 MATS (16"x 20" OD)

Double whites, acid-free  
surfaces with stiff backers  
Center-cut with 10"x 15"  
or 12"x 16" openings

\$14 WHITE MATS BLACK CORE

Available only with 10"x 15"

#### \$5 TRANSPORT BOXES

for framed images  
(some assembly req.)  
\$2 from each mat, frame  
or box purchase  
goes to EPS

Contact:

Bruce Bittle 541.343.2386

FREE Delivery to club meetings!

## Legal Stuff

**The Bellows** is published ten times per year by the *Emerald Photographic Society*, a not-for-profit organization, and is completely supported by EPS funds. All materials within do not necessarily reflect the views of the EPS Board of Directors, officers, membership, supporting vendors or editor of this publication. All brand and product names listed are trademarked and/or registered and are not necessarily endorsed by EPS. However, EPS

does endorse vendors, offering discounts to our members, listed on the last page (randomly as space allows on other pages) of each issue.

**The Bellows** policy is to always adequately attribute all images & posted content. **The Bellows** can not be responsible for images or any other content acquired from unidentified web pages with no visible attribution or on-line contact information.

Reprinting articles from **The Bellows** for non-commercial use is permitted so long

as the photo or article is not copyrighted and source credit is given to EPS, the author and this newsletter. Any other reproduction requires specific written permission from the editor.

Inquiries about, or submissions for **The Bellows** (deadline is the last week of the month for following month publication) send to Editor, c/o Emerald Photographic Society, 1236 Debrick Rd., Eugene, OR 97401, or by email <bittled70@gmail.com>





## *EPS Preferred Vendors*



Show your membership card to these vendors for nice discounts.  
Be a good ambassador for EPS each time you receive these discounts  
by letting these folks know how much you appreciate their support.



### **Dotson's Camera Store**

1668 South Willamette Street

15% Discounts on in-house processing (including slide processing)

*Your camera's home  
away from home*

### **Focal Point Photography**

161 West Ellendale, Dallas, OR

Equipment Rentals, Trade Ins, discounts on most items Call Mike Lowery, 503.623.6300

### **Oregon Gallery**

199 East Fifth Avenue, Eugene

15% discount on all matting and framing

### **Red River Paper**

Professional quality papers of all types for much less than printer mfg. brands

10% rebate to EPS when ordered directly from our web site

### ***The Shutterbug* Camera Stores**

Two Stores 207 Coburg Rd. & Valley River Center

10% discount on photo accessories and photo finishing

**NEW**

### **TechMedic**

*EPS Preferred Vendor*

### **Apple Mac Computer Technicians**

2125 W. 7th Ave (Big "Y" Center)

541•484•3603

**NEW**

### **U of O Bookstore Art Department (Basement)**

Corner of 13th Ave. & Alder St.

20% discount on all art supplies

### **Web Mats & Frames / Vistra Gallery**

411 West 4th Street, Eugene

20% discount on printing, matting & framing, Up to 30% on orders over \$500