

Dec  
2019

# The BELLOWS

## New 4Cs Competition Soon For EPSers

**A**lright, let me be honest. This 'New' competition is not new to our photo club's 4Cs council, it will just be 'new'

to EPS members essentially because our former EPS 4Cs Rep never promoted it. And you all know who to blame for that, me. *(Read on and learn how I've earned the epithet of 'Curmudgeon' for good reason).*

For the EPS newbies, our 4Cs regional parent council of thirty plus photo clubs has always managed two on-going photo competitions. First, a monthly interclub competition that EPS selectively entered our images for a number of years. And second, 4Cs has a quarterly competition for individual image submissions.

My lazy thinking while EPS was still competing in the monthly EID, (*digital*), interclub competition, that adding the Individual Invitational EID competition, would cause a lot of confusion with four additional deadlines to try to keep straight.

With a recent vote by members of the EPS Board, our club has once again decided

not to enter the monthly 4Cs interclub competition. As a result of this decision, there is now a very good reason why EPSers will still have

an opportunity to compete with all other members of 4Cs clubs.

The reason is that our club at the beginning of next year will have a new 4Cs Representative who has enthusiastically agreed to promote the 4Cs Individual EIG Quarterly Invitational competition. **Jean Jensen** has accepted the responsibility for making this competition happen for all EPS members beginning in January 2020.

Jean has already checked the simple rules for

submitting images, the number allowed, and, most importantly, she will send timely email reminders to all EPSers prior to entry deadlines each quarter. *(You, too, can find this info on the Columbia Council of Camera Clubs web site.)*

So, give Jean a big thank you for keeping EPS in a higher level of competition with all the other 4Cs photo clubs in OR, WA and ID.

Bruce Bittle



**Jean Jensen**

*New EPS 4Cs Representative*

## EPSers Vote For 2020 Officers/By-Laws Dec 5th

**EPS December Meeting  
High School Room  
At the church  
(All details on page 2)**

### Inside This Issue

- EPS News - 2020 Officers & By-Law changes 2
- 4Cs Monthly Winning Images 3
- Science Daily Items of Interest 4
- Tim Grey - Q & A Lightroom Answers 5
- What to Know - Where to Go - Classifieds 6

Light is your subject – Color is your partner

## EPS Club News

But, Lady Luck can sometimes be your best buddy

# EPS Officers & By-Laws Changes For 2020

### Proposed slate of officers, board members at-large, and committee chairs for 2020

The membership shall vote on the following proposed slate of officers, and the proposed change to the by-laws, which adds two board members at large, on the first Thursday meeting in December.

Nominations can also be made from the floor for any position. If nominated from the floor, a candidate does need to be present and agree to accept the position he or she was nominated for prior to the vote.

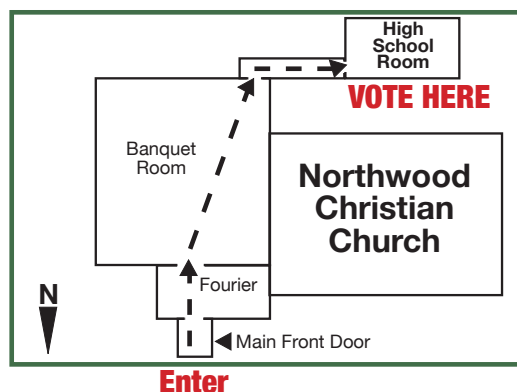
#### Officers and Board Members:

President	Ron Seguin
Vice-President	<b>Vacant</b>
Treasurer	Kevin Reilly
Secretary	Linda Magyary
Board Members at Large	Mike VanDeWalker
	Graham Smith
	Jean Jensen
	Krystal Grube
	Chris Baird *
	Rick LeBrun **

\*(pending By-Laws approval)

#### Committee Chairs:

Challenge	Jerry Gowins	
Competition	(Co-chairs) Hernando Convers, *Mark Gotchall	*Non Voting
Critiquing	(Co-chairs) Terry Smith, *Jim Buch	*Non Voting
Education	(Co-chairs) Jon Parker, *Dave Horton	*Votes as Past Pres.
Photo Forum	(Co-chairs) Rochelle Villanueva, *Kevin Reilly	*Votes as Treasurer



### Proposed change to the EPS By-Laws adding two board members at large... *changes are in bold italicized.*

EPS is administered by a board of directors, which is comprised of a president, vice president, immediate past president, secretary, treasurer, and (change four to six) board members at large, plus the chairs of the challenge meeting, competition meeting, critiquing, education meeting, and photo forum meeting committees. Seven members of the board of directors, one being the president or vice president, are required to form a quorum for the transaction of business.

**Additionally, Board members at large serve one-year terms and shall not serve more than three consecutive years on the board.**

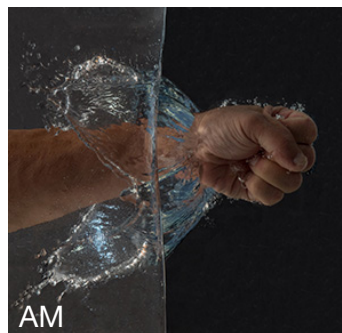
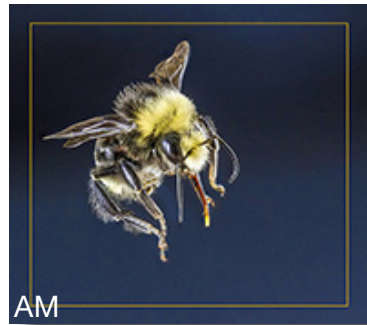
Submitted by **Ron Seguin**, EPS President

## Members Vote At December 5th Meeting





# 4Cs Winners Monthly Digital Competition



AM - Award  
of Merit  
HM - Honorable  
Mention

EPS Does not  
enter this  
competition



# New Image Judging Brain Bias Discovered

**W**e've known that often when looking at images, we don't assess each one on its own merits. However, this bias is not the contrary effect you might intuitively think. Instead, according to a new study, our brain develops a surprising on-the-spot influencing bias. A beautiful image does not make the next one look less attractive, it makes it more attractive.

A University of Sydney study involved presenting a sequence of 40 images depicting scenery or still life to 24 observers who were asked to rate each one using a slider to indicate how aesthetically appealing it was. A sequence was presented 20 times with

each run a different random order. In this way, all images were rated 20 times, but with a different sequence

***"The surprising findings are that the bias is additive! Ratings are higher following attractive images, and lower following unattractive ones."***

preceding it. The resulting data is clear -- observers don't rate each image consistently but are biased by what they just saw.

"Conventional wisdom has naively supposed a kind of 'reverse effect' whereby an image may look more attractive if it follows an unattractive one. The surprising findings are that

the bias is additive! Ratings are higher following attractive images, and lower following unattractive ones." This effect is called, "serial dependence," which describes how our brain develops a systemic bias towards recent past experience.

Similar studies have found many other attributes including -- orientation, numerosity, facial expression as well as attractiveness -- are systematically biased towards recent past experience.

"While it is often said that beauty is in the eye of the beholder, this is not the whole story -- these findings show that it partly depends on what was recently seen," a researcher said.

*Science Daily  
November 20, 2019  
University of Sydney, Aus.*



# New Camera May Help Find Dark Matter

**R**esearchers have made one of the highest-performance cameras ever composed with sensors that count single photons, or particles of light.

With more than 1,000 sensors, (pixels), this camera may be useful in future space-based telescopes searching for chemical signs of life on other planets, and in new instruments designed to search for the elusive "dark matter" believed to constitute most of the "stuff" in the universe.

Described in Optics Express, the camera consists of sensors made from superconducting nanowires, which can detect single photons. They are among the best photon counters in terms of speed, efficiency, and range of color sensitivity.

The nanowire detectors also have the lowest dark count rates of any

type of photon sensor, meaning they don't count false signals caused by noise rather than photons. This feature is especially useful for dark-matter searches and space-based astronomy. But cameras with more pixels and larger physical dimensions than previously available are required for these applications, and they also need to detect light at the far end of the infrared band, with longer wavelengths than currently practical.

NIST's camera is small in physical size, a square measuring 1.6 millimeters on a side, but packed with 1,024 sensors (32 columns by 32 rows) to make high-resolution images. The main challenge was to find a way to collate and obtain results from so many detectors without overheating.

Motivation for making this camera is NASA's Origins Space

Telescope project which is looking to use arrays for analyzing the chemical composition of planets orbiting stars outside of our solar system. Each chemical element in a planet's atmosphere absorbs a unique set of colors.

Other applications are also possible. For example, this camera may help find dark matter. Researchers around the world have been unable to find so-called weakly interacting massive particles (WIMPs) and are considering looking for dark matter with lower energy and mass. Superconducting nanowire detectors offer promise for counting emissions of rare, low-energy dark matter and discriminating real signals from background noise.

*Science Daily  
November 19, 2019  
National Institute of  
Standards & Technology (NIST)*







## Q &amp; A With Tim Grey



**Q:** *If in Lightroom [Classic CC], sharpening is intended for compensating for [normal] reduce capture sharpness and not for final printing, where and how do you evaluate sharpening [before printing]?*

**A:** In Lightroom Classic CC the final output sharpening can only be evaluated after the [image] is actually [printed]. **In all cases of sharpening in Lightroom Classic CC, there is no preview that enables you to evaluate the final result [on-screen]. [EPSers: Note this if you are entering images in Competition using this program and judges think they look over sharpened. Ed.]**

Instead, the image must be printed or exported [to another program] before sharpening can be evaluated. If not satisfied with a printed result in Lightroom Classic CC, adjust the settings and [print] again. This can lead [to the expense] of trial-and-error. However, with time a sense of the settings typically [desired] for various types [of images can be internalized].

For images being shared online, the output sharpening generally works perfectly well, even without a preview. However, for a printed [final output] it can be a challenge to create a great result with no preview [available].

For [that] reason, when creating a print I will send the final image from Lightroom to Photoshop, so I can resize, sharpen and preview the sharpening [on-screen] before actually creating the [final print].

**Q:** *Are there still issues between the Adobe software and MacOS Catalina to hold off on updates?*

**A:** Many readers may have heard, about problems with the initial upgrade to MacOS Catalina (v. 10.15), as well as with iOS 13 for iPhones and iPads.

I now have no significant concerns about upgrading to MacOS Catalina and the latest versions of the Adobe Creative Cloud applications. But, I also wouldn't feel any sense of urgency.

There were some issues early on, especially with iOS 13. A handful affected Photoshop and Lightroom Classic, and in some cases core features of iPhones in particular. Fortunately, it seems that the latest updates have stabilized.

So, if you're not in a hurry to upgrade, I still suggest that to hold off a little longer [is ok].

**Q:** *Using the Brush tool in Photoshop, the actual painting lags far behind my cursor. Is there a fix?*

**A:** The Smoothing setting was added in a 2018 Photoshop upgrade for [several] tools. However, when set at 100%, maximum Smoothing causes maximum lag and frustration.

Being precise is easier [without] brush lag that provides no benefit for photographic images. Set Smoothing at 0%, then increase the value [as when] applying a signature where smooth brush strokes are needed.

**Q:** *For photos that you may want to print again, do you save them in a collection? Do you save as raw or TIFF? Do you print from Lightroom [Classic] or Photoshop?*

**A:** For situations where you want to track photos and print multiple times I would recommend using a keyword for that purpose. When I do print, I prefer to use Photoshop rather than Lightroom Classic. This workflow leads to a TIFF (or PSD) image in addition to my original raw capture still being alongside the derivative image in Lightroom.



Tim Grey publishes the monthly on-line magazine *PIX-ODOLOGY*, and is a top educator offering clear guidance on complex photo subjects. He is also a Photoshop World Dream Team member.

[Note: Tim's articles are reprinted with permission & abridged to fit available space.]



## What To Know

### December 2019

- 5 Challenge Night - Theme TBA Nov. 7
- 12 Digital Competition night

**Only Two Meetings  
this month**

### January 2020

- 2 Challenge Night - Theme TBA Dec. 5
- 9 Ed. Night, TBA
- 16 Digital Competition night
- 23 Photo Forum Night, Q & A, Demos
- 30 Board Meeting 7 PM

### February 2020

- 6 Challenge Night - Theme TBA Jan. 2
- 13 Ed. Night, TBA
- 20 Digital Competition night
- 27 Photo Forum Night, Q & A, Demos

### March 2020

- 5 Challenge Night - Theme TBA Feb 6
- 12 Ed. Night, TBA
- 19 Digital Competition night
- 26 Photo Forum Night, Q & A, Demos

### April 2020

- 2 Challenge Night - Theme TBA Mar 6
- 9 Ed. Night, TBA
- 16 Digital Competition night
- 23 Photo Forum Night, Q & A, Demos

### May 2020

- 7 Challenge Night - Theme TBA Apr. 2
- 14 Ed. Night, TBA
- 21 Digital Competition night
- 28 Photo Forum Night, Q & A, Demos

### June 2020

- 4 Challenge Night - Theme TBA May 7
- 11 Ed. Night, TBA
- 18 Digital Competition night
- 25 Photo Forum Night, Q & A, Demos

## Where To Go

### • At the Courthouse

**Keith Munson** will have a show of travel photography in the Harris Hall lobby just inside the glass doors by the flag poles at 125 E. 8th Avenue. His show will be available weekdays from 8 - 5 beginning December 2nd and ending the 31st. It will not be available on government holidays.

**Jim Buch** will have a personal photo show at this same Courthouse location weekdays from 8 - 5 beginning Thursday, January 2nd thru the 31st.

## Classified

**Classifieds Ads Free  
to all  
EPS members**

This  
Space  
Available

**Got a show?  
We want  
to know!**

**Have your photos  
been published?**

- Magazines
- Brochures
- Calendars
- Journals

**Send complete details to:  
<bittled70@gmail.com>**

*"If you don't blow your own horn,  
somebody else will use it  
for a spittoon."*

Ambrose Bierce

**EPS WHOLESALE**  
print show supplies  
**Best prices in town**  
**Available only to EPS**

**\$17 FRAMES (16"x 20" OD)**  
Black or Brushed Silver Aluminum,  
Includes hardware & clean glass

**\$7 MATS (Fit frames above)**  
Double whites, 10"x15" or 12"x16" openings  
Whites / black core 10"x15" only  
Stiff backers included on all

**\$5 TRANSPORT BOXES**  
for carrying framed images  
(some assembly req.)

**\$2 goes to EPS from each  
of the above purchases**

**Contact:**  
**Bruce Bittle 541.343.2386**  
**FREE Delivery to club meetings!**

## Legal Stuff

**The Bellows** is published ten times per year by the *Emerald Photographic Society*, a not-for-profit organization, and is completely supported by EPS funds. All materials within do not necessarily reflect the views of the EPS Board of Directors, officers, membership, supporting vendors or editor of this publication. All brand and product names listed are trademarked and/or registered and are not necessarily endorsed by EPS. However, EPS

does endorse vendors, offering discounts to our members, listed on the last page (randomly as space allows on other pages) of each issue.

**The Bellows** policy is to always adequately attribute all images & posted content. **The Bellows** cannot be responsible for images or any other content acquired from unidentified web pages with no visible attribution or on-line contact information.

Reprinting articles from **The Bellows** for non-commercial use is permitted so long

as the photo or article is not copyrighted and source credit is given to EPS, the author and this newsletter. Any other reproduction requires specific written permission from the editor.

Inquiries about, or submissions for **The Bellows** (deadline is the last week of the month for following month publication) send to Editor, c/o Emerald Photographic Society, 1236 Debrick Rd., Eugene, OR 97401, or by email <bittled70@gmail.com>



## *EPS Preferred Vendors*

Show your membership card to these vendors for nice discounts.  
Be a good ambassador for EPS each time you receive these discounts  
by letting these folks know how much you appreciate their support.



### **Dotson's Camera Store**

1668 South Willamette Street

15% Discounts on in-house processing (including slide processing)

*Your camera's home  
away from home*

### **Focal Point Photography**

161 West Ellendale, Dallas, OR

Equipment Rentals, Trade Ins, discounts on most items Call Nate, 503.623.6300

### **Oregon Gallery**

199 East Fifth Avenue, Eugene

15% discount on all matting and framing

### **Red River Paper**

Professional quality papers of all types for much less than printer mfg. brands

10% rebate to EPS when ordered directly from our web site

### **The Shutterbug Camera Stores**

Two Stores 207 Coburg Rd. & Valley River Center

10% discount on photo accessories and photo finishing

### **TechMedic**

**Apple Mac Computer Technicians**

2125 W. 7th Ave (Big "Y" Center)

541•484•3603

*EPS Preferred Vendor*

### **U of O Bookstore Art Department (Basement)**

Corner of 13th Ave. & Alder St.

20% discount on all art supplies