

Jan  
2020

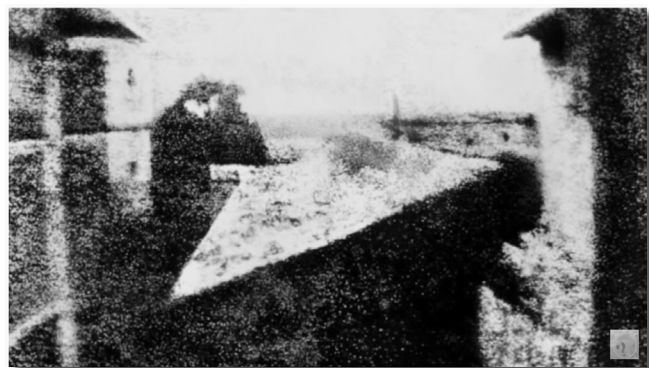
# The BELLOWS

## 2020 Is Unknown - Past Years Got Us Here

**A**lmost 280 years ago recording a permanent image for posterity was seen for the first time. The invention of photography literally saw the light of day when Joseph Nicéphore Niépce in the Burgundy region of France made a twelve-hour exposure capturing an image from his bedroom window sill in 1826. Using Bitumen of Judea on metal the Bitumen hardened in proportion to the amount of light that hit it. Niépce called his process heliography.

### A Short History of Other Photo Firsts

- **First photo of a person** - circa 1830s Louis Daguerre in Paris, France. A long exposure of a street image captures a guy getting shoes shined.
- **The first Selfie photo** - 1839 by Robert Cornelius, Center City, Philadelphia.
- **First hoax photo** - 1840, taken by Hippolyte Bayard to spite a competitor photographer.
- **First photo of the moon** - 1840, John W. Draper, NY University Observatory
- **First photo of a US President** - 1843, John Quincy Adams taken after he was out of office.
- **First photo of sun** - 1845, Louis Fizeau & Leon Foucault - Daguerreotype 1/60 sec. exposure.
- **First news photo** - 1847, of a man arrested in France. Photojournalist who took it is unknown.
- **First photo of US President in office** - 1849, James J. Polk.
- **First aerial photo** - 1860, James Wallace Black, Boston from 2,000 ft. in hot-air balloon.
- **First color photo** - 1861, James Clerk Maxwell (Scientific process), taken by Thomas Sutton inventor of the SLR camera.
- **First color landscape photo** - 1877, Louis Authur Ducos du Hauron, taken of a small town in France.
- **First photo of lightning** - 1882, by William Jennings
- **First photo of a tornado** - 1884, by photo amateur A.A. Adams, a fruit farmer in Anderson County, KS.
- **First photo from space** - 1946, from a V-2 rocket, altitude of 65 miles
- **First rocket launch photo** - 1950 Cape Canaveral NASA.
- **First digital photo** - 1957 a digital scan of a film print shot by Russell Kirsch.
- **First photo of Earth from Moon** - 1966, by a Lunar orbiter received by Robledo De Chervil, Spain
- **First photo from Mars** - 1976, NASA from Viking 1 landing.
- **First 3D photo portrait of US President** - 2016, Barack Obama, by Smithsonian & USC Institute for Creative Technologies, fifty LED lights, eight 'sports' cameras, and six wide angle cameras.



*The original image was barely discernible but Niépce knew he was onto something. (Image was later enhanced.)*



### EPS Dues Are Due This Month

Single - \$35    Couple - \$50  
Student - \$20

(Mail - PO Box 7573 Spfld. 97475)

### Inside This Issue

- |   |   |
|---|---|
| • EPS News - 2020 Officers & Coast Field Trip | 2 |
| • 4Cs Quarterly Competition Rules explained   | 3 |
| • "Kids Day Out" Field Trip will happen soon  | 4 |
| • Tim Grey - Q & A Lightroom Answers          | 5 |
| • What to Know - Where to Go - Classifieds    | 6 |



Light is your subject – Color is your partner

## EPS Club News

But, Lady Luck can sometimes be your best buddy

### Members 2020 Dues are due this month

#### Kevin & Rochelle Have Picked This Year's EPS All Members Coast Camping Field Trip Destination

#### Bullards Beach State Park

*Make your reservations now*

- **When** -- Arrive **Friday, September 18**  
Leave **Tuesday, September 22**
- **What's to do?** -- Lots of daytime & nighttime photography, campfires, beach hikes, shopping, eating, etc.
- **Campground** -- If you're camping, reserve a site at Bullards Beach State Park. We reserved site 'A'11. It's big with close parking for non-camping guests. There are over 75 sites in the campground, a few left in 'A' loop. If you think you might go, **make your reservations now**.
- **Non-campers** -- there are a number of **motels in Bandon**. The closest to the campground (good Yelp reviews) is the **Lamplighter Inn**.
- **Potluck** -- We'll have a potluck on Saturday night at the campground.
- **Dinner out on Sunday** -- We don't know where yet. Suggestions?  
*A huge turnout last year at Brookings. Everybody had a great time.  
Don't miss out on this year's trip. We want to see you there!*  
*Thanks - Kevin Reilly & Rochelle Villanueva*



#### "KIDS DAY OUT" FIELD TRIP COMING SOON



**"Thank you"**  
**Adonna Roelke**  
**Who organized**  
**EVERYTHING!**

**Details On Page 4**



### EPS officers & Board members for 2020

#### Officers and

President Ron Seguin  
Vice-President **Vacant**  
Treasurer Kevin Reilly  
Secretary Linda Magyary

#### Committee Chairs:

Challenge Jerry Gowins  
Competition (Co-chairs) Hernando Convers, \*Mark Gotchall  
Critiquing (Co-chairs) Terry Smith, \*Jim Buch  
Education (Co-chairs) Jon Parker, \*\*Dave Horton  
Photo Forum (Co-chairs) Rochelle Villanueva, Kevin Reilly

\* Non-voting position \*\*Votes as Past President

#### Board Members at large \*

Mike VanDeWalker  
Graham Smith  
Jean Jensen  
Krystal Grube  
Chris Baird  
Rick LeBrun

#### 2020 By-Law Changes

\* Board members at large serve one-year terms not to exceed three consecutive.

\* Two new members added





# 4Cs Quarterly Individual Digital Competition Has Never Been Easier!



Welcome To The 4Cs QEID Entry Site

\* Quarterly Electronic Image Division

If you qualify and want to enter the QEID Competition, you are in the right place BUT not at the right time.

**THE COMPETITION IS CURRENTLY CLOSED!**

## When can entries be made?

Entries for the QEID Competitions can be made approximately 30 days before the deadline dates:

Winter - January 31st, Spring - April 30, Summer - July 31st, Fall - October 31

**Call for Entries  
Will Open  
Soon**

## Number and Type of Image Files Allowed:

Members of 4Cs Clubs are allowed to enter a maximum of 3 JPG image files in the QEID Competitions.

## Image File Size Requirements:

- 2 Megabyte (2,000 KB) is the maximum file size allowed.
- 1050 pixels is the maximum vertical (top to bottom) dimension allowed.
- 1400 pixels is the maximum horizontal (left to right) dimension allowed.

## Competition Categories:

Three entries are allowed they can all be in the same category or a mixture of the categories as follows:

**Altered Reality** - Depicts photographic subjects in a substantial departure from realism.

**Monochrome** - Black and White or Sepia tones.

**Traditional** - Depicts realism in the form of a color image.

## QEID Entry Portal



Used by 4Cs club members to enter the competition

**Look for this Entry Form  
on the 4Cs web site  
WHEN THE PORTAL  
OPENS**

QEID Entry Page

- Maximum file size of 2MB
- Maximum image width of 1,400 pixels
- Maximum image height of 1,050 pixels
- JPG files only, sRGB color space
- Uploaded files will automatically be renamed, OK to upload IMG\_1234.JPG or DSC\_1234.JPG, etc.
- Required fields marked with an \*

First Name:  \* Last Name:  \*

Club Name:  \* Email:

Entry 1:  No file chosen \* Title 1:

Category: ☐ Altered Reality, ☐ Monochrome, ☐ Traditional

Entry 2:  No file chosen Title 2:

Category: ☐ Altered Reality, ☐ Monochrome, ☐ Traditional

Entry 3:  No file chosen Title 3:

Category: ☐ Altered Reality, ☐ Monochrome, ☐ Traditional

**Our Club Name  
EPS**

*It's time for EPS to compete with all other 4Cs big guns.*







# EPS Field Trip Soon - *Watch For Email*



**GILBERT CHILDRENS MUSEUM**

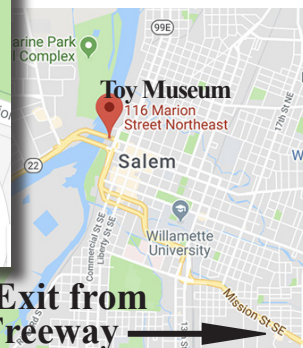
## Salem

- Toy Museum Opens - 10 AM
- Admission \$8, Seniors/Mil. \$7

**LOCATION**  
116 Marion Street NE



COME  
MEET  
"IGNITOR"



**"KIDS DAY OUT"**



**HISTORIC CAROUSEL**



## Albany

### LUNCH

- Brick & Mortar Cafe  
222 First Ave. West  
12:30 - 2 PM(closing)
- Carousel, 2 - 5 PM
- Wood Carvers, 4 PM

**LOCATION**  
503 West 1st Ave.







## Q & A With Tim Grey

ASK  
tim  
grey

**Q:** *A simple problem is driving me nuts. In the Library module in Lightroom Classic I can't show all pictures with a color label of purple unless I am in a collection or folder that only has purple labels. Hopefully, you can help my workflow.*

**A:** If you want to filter your photos based on all images in your Lightroom Classic catalog you need to first choose "All Photos" in the Catalog section of the left panel in the Library module. You can then specify the filter criteria you want to use to locate specifically labeled photos.

**Click for More Detail:**

<https://mail.google.com/mail/u/0/#inbox/FMfcgxwGCQWtxXjtzTctVL-zvbVQCPTsw>

**Q:** *What considerations (content, workflow, etc.) apply when creating keywords for images that will be submitted to stock agencies such as Getty Images or iStock?*

**A:** When keywording photos that will be submitted to a stock agency, there are several considerations. First, you want to ensure that keywords are accurate. Also be thoroughly in line with the submission guidelines [for each] agency when you submit your photos, and make sure the keywords will help the photo be found by a client who may be interested in using the images.

**Click for More Detail:**

<https://mail.google.com/mail/u/0/#inbox/FMfcgxwGCGsZjjPbxsB-JJKXqBFkqmTTr>

**Q:** *The Folders list in Lightroom Classic do not display some of the subfolders on my hard drive. How do I update those folders that are present on my hard drive so they are also present in Lightroom Classic?*

**A:** The Folders list in Adobe Lightroom Classic only displays folders that contain photos being managed by Lightroom. Therefore, to view those folders in Lightroom you would need to import the photos (if applicable) contained within those folders.

**Click for More Detail:**

<https://mail.google.com/mail/u/0/#inbox/FMfcgxwGCQVltvrGVLFIDzGRcK-DINNt>

**Q:** *Recently moving from Houston to Michigan, I noticed that twilight time is increased here. My question regards the blue hour. Does it also increase more than the hour and is it altered by an overcast?*

**A:** The duration of "blue hour" does indeed vary with the duration being shorter near the equator. One of the first things to understand about blue hour is that it isn't considered to be a full hour. The term is just a shorthand reference to that period a bit after sunset and before sunrise when the sky is illuminated with blue light and the landscape is still relatively dark.

**Click for More Detail:**

<https://mail.google.com/mail/u/0/#inbox/FMfcgxwGCHDlwmvWB-FzhPrPZqDxZjjGV>

**Q:** *Are keywords and tags the same thing? I use Photoshop Elements along with Photoshop CS6 and skip Adobe Bridge entirely.*

**A:** Yes, the Keyword Tags in Adobe Photoshop Elements represent the same metadata field as Keywords shown in other applications. The Photoshop Elements Organizer simply uses different terminology for keywords.

**Click for More Detail:**

<https://mail.google.com/mail/u/0/#inbox/FMfcgxwGCQZFBDbdvNpNKXVFRk-wddsnB>

**Q:** *Most of my photos are located on my desktop. The only way to post to Instagram is by sending them to my iPhone and then uploading? Is there an easier way?*

**A:** You can share photos to Instagram from a computer by either using a software tool designed for this purpose (such as the LR/Instagram plug-in for Adobe Lightroom Classic), or by using a feature that simulates a mobile device with the web browser on your computer.

**Click for More Details:**

<https://mail.google.com/mail/u/0/#inbox/FMfcgxwGCGxBpVlwW-ZbtlgKLclPZhFsz>

*Tim Grey is a top educator offering clear guidance on complex photo subjects. He is also a Photoshop World Dream Team member.*

*[Note: Tim's articles are reprinted with permission & abridged to fit available space.]*





## What To Know

### January 2020

- 2 Challenge Night - Theme TBA Dec. 5
- 9 Ed. Night, **TBA**
- 16 Digital Competition night
- 23 Photo Forum Night, Q & A, Demos
- 30 **Board Meeting 7 PM**

### February 2020

- 6 Challenge Night - Theme TBA Jan. 2
- 13 Ed. Night, **TBA**
- 20 Digital Competition night
- 27 Photo Forum Night, Q & A, Demos

### March 2020

- 5 Challenge Night - Theme TBA Feb 6
- 12 Ed. Night, **TBA**
- 19 Digital Competition night
- 26 Photo Forum Night, Q & A, Demos

### April 2020

- 2 Challenge Night - Theme TBA Mar 5
- 9 Ed. Night, **TBA**
- 16 Digital Competition night
- 23 Photo Forum Night, Q & A, Demos

### May 2020

- 7 Challenge Night - Theme TBA Apr. 2
- 14 Ed. Night, **TBA**
- 21 Digital Competition night
- 28 Photo Forum Night, Q & A, Demos

### June 2020

- 4 Challenge Night - Theme TBA May 7
- 11 Ed. Night, **TBA**
- 18 Digital Competition night
- 25 Photo Forum Night, Q & A, Demos

**Summer Break**  
**No meetings**  
**July - August**

## Where To Go

### • At the Courthouse

**Jim Buch** will have a personal photo show with multiple electric themes at Harris Hall in the Lane County Courthouse located at 125 E. 8th Avenue in Eugene.

The show will be open weekdays from 8 - 5 beginning Thursday, January 2nd and the show will come down Friday the 30th.

## Classified

**Classifieds Ads Free  
to all  
EPS members**

This  
Space  
Available

**Got a show?  
We want  
to know!**

**Have your photos  
been published?**

- Magazines
- Brochures
- Calendars
- Journals

*Send complete details to:*  
**<bittled70@gmail.com>**

*"If you don't blow your own horn,  
somebody else will use it  
for a spittoon."*

Ambrose Bierce

**EPS WHOLESALE**  
print show supplies  
**Best prices in town**  
**Available only to EPS**

**\$17 FRAMES (16"x 20" OD)**  
Black or Brushed Silver Aluminum,  
Includes hardware & clean glass

**\$7 MATS (Fit frames above)**  
Double whites, 10"x15" or 12"x16" openings  
Whites / black core 10"x15" only  
Stiff backers included on all

**\$5 TRANSPORT BOXES**  
for carrying framed images  
(some assembly req.)

**\$2 goes to EPS from each  
of the above purchases**

**Contact:**  
**Bruce Bittle 541.343.2386**  
**FREE Delivery to club meetings!**

## Legal Stuff

**The Bellows** is published ten times per year by the *Emerald Photographic Society*, a not-for-profit organization, and is completely supported by EPS funds. All materials within do not necessarily reflect the views of the EPS Board of Directors, officers, membership, supporting vendors or editor of this publication. All brand and product names listed are trademarked and/or registered and are not necessarily endorsed by EPS. However, EPS

does endorse vendors, offering discounts to our members, listed on the last page (randomly as space allows on other pages) of each issue.

**The Bellows** policy is to always adequately attribute all images & posted content. **The Bellows** cannot be responsible for images or any other content acquired from unidentified web pages with no visible attribution or on-line contact information.

Reprinting articles from **The Bellows** for non-commercial use is permitted so long

as the photo or article is not copyrighted and source credit is given to EPS, the author and this newsletter. Any other reproduction requires specific written permission from the editor.

Inquiries about, or submissions for **The Bellows** (deadline is the last week of the month for following month publication) send to Editor, c/o Emerald Photographic Society, 1236 Debrick Rd., Eugene, OR 97401, or by email <bittled70@gmail.com>



## *EPS Preferred Vendors*

Show your membership card to these vendors for nice discounts.  
Be a good ambassador for EPS each time you receive these discounts  
by letting these folks know how much you appreciate their support.



### **Dotson's Camera Store**

1668 South Willamette Street

15% Discounts on in-house processing (including slide processing)

*Your camera's home  
away from home*

### **Focal Point Photography**

161 West Ellendale, Dallas, OR

Equipment Rentals, Trade Ins, discounts on most items Call Nate, 503.623.6300

### **Oregon Gallery**

199 East Fifth Avenue, Eugene

15% discount on all matting and framing

### **Red River Paper**

Professional quality papers of all types for much less than printer mfg. brands

10% rebate to EPS when ordered directly from our web site

### ***The Shutterbug* Camera Stores**

Two Stores 207 Coburg Rd. & Valley River Center

10% discount on photo accessories and photo finishing

### ***TechMedic* Apple Mac Computer Technicians**

*EPS Preferred Vendor*

2125 W. 7th Ave (Big "Y" Center)

541•484•3603

### **U of O Bookstore Art Department (Basement)**

Corner of 13th Ave. & Alder St.

20% discount on all art supplies