

Sept  
2020

# The BELLOWS

## EPSers Find Virtual Images Work Well, Maybe Better Than At Real Meetings



Photo - Alex Morely



Photo - Andy Nowlen

Many EPSers are saying the digital Zoom images look better than what they see on the TV at regular meetings. They all say their monitors are new.

If the images you see aren't very good that may be telling you it's time for a monitor upgrade.



Photo - Andy Nowlen

With virus regulations promising to stay in force at least a few months more, being outdoors with a true purpose is far luckier for EPSers than many other folks. We've already been on location at all the scenic hot spots that will be jammed with dreaded cell-phone "selfie-shooters" so instead we'll be having fun searching strange unknown secluded back roads

looking for award winning 'keepers' we've never previously seen.

Opportunity is knocking to make this the best fall photo time many of us have had in a long time. All you need to remember is the footer at the bottom of this page, then go have some new fun.



**ALL EPS ZOOM MEETINGS  
Will CONTINUE UNTIL  
FURTHER NOTICE**

### Inside This Issue

- |   |   |
|---|---|
| • EPS Club News - Field Trips, Fun Night  | 2 |
| • 4Cs Quarterly Winning Images - Altered  | 3 |
| • 4Cs Quarterly Winning Images - Mono     | 4 |
| • 4Cs Quarterly Winning Images - Color -1 | 5 |
| • 4Cs Quarterly Winning Images - Color -2 | 6 |
| • 4Cs Quarterly Winning Images - Color -3 | 7 |
| • Tiny Roving Camera on a Beetle          | 8 |
| • What to Know - Classifieds              | 9 |



Light is your subject – Color is your partner

## EPS Club News

But, Lady Luck can sometimes be your best buddy

### EPS Field Trip Information

**Kevin & Rochelle  
Have Organized  
This Year's EPS  
All Members  
Coast Camping  
Field Trip Destination**

### Bullards Beach State Park

Arrive Fri., September 18  
Leave Tuesday, Sept. 22

- **What's to do?** -- Lots of day-time & nighttime photography, campfires, beach hikes, shopping, eating, etc.
- **Campground** -- We reserved site A-11. It's big with close parking for non-camping guests.

**All sites have been taken.  
There is a waiting list on-line.**

• **Non-campers**

There are a number of motels in Bandon.

The closest to the campground is Lamplighter Inn.

- **Saturday night Potluck**  
At the campground.
- **Dinner out on Sunday**  
Location (TBA). Suggestions?

*A huge turnout last year at Brookings. Everybody had a great time.*

**Don't miss out on this year's trip.**

**We want to see you there!**

**Thanks -**

**Kevin Reilly &  
Rochelle Villanueva**



### A First for EPS Big "Photo-Poker" Summer Recess Fun Night

Some good fun was added to one of our 'extra' meetings during the continued coronavirus restrictions.

A Photo-Poker contest was introduced by **Gary Lentsch** and **Carla Aguilar** who had a virtual poker program ready to go.

Anyone submitting images for observation for the evening was automatically dealt five virtual cards – each person could decide which cards to fold / keep – then dealt a final hand shown to all. Ditto for all others showing that evening.

No one learned much about photography or processing, but we all learned never to play poker with **Carmen Bayley**.



### Board Meeting

#### After Zoom Meeting Thursday (24th)

**Board Members & Chair Persons  
mandatory attendance**

*Other EPS members welcome as Guests*

#### Position Open Official EPS Field Trip Coordinator

##### Job Description

- A Friendly personality
- Good organization ability
- Be a Lifetime Oregonian (Or a close facsimile)
- Have traveled extensively
- Familiar with annual photo events / seasonal activities
- Provide local information for lodging, camping, food etc.
- Lead occasional auto caravans, and hikers safely & expeditiously
- No extensive camera knowledge required

**Call 619.548.7301**



### EPS officers & Board members for 2020

#### Officers:

President	Ron Seguin
Vice-President	Anne Campbell
Treasurer	Kevin Reilly
Secretary	Linda Magyary

#### Board Members at Large

Mike VanDeWalker	Krystal Grube
Graham Smith	Chris Baird
Jean Jensen	Gary Lentsch

#### Committee Chairs:

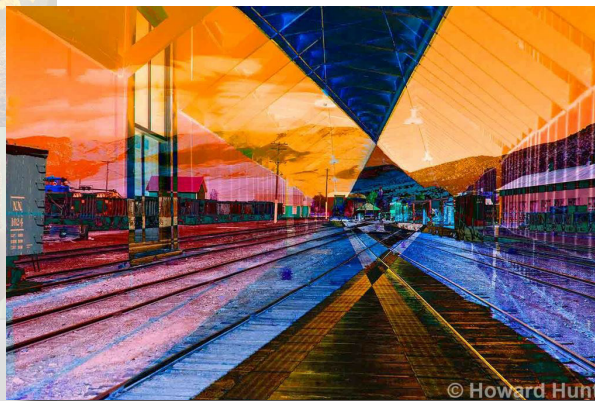
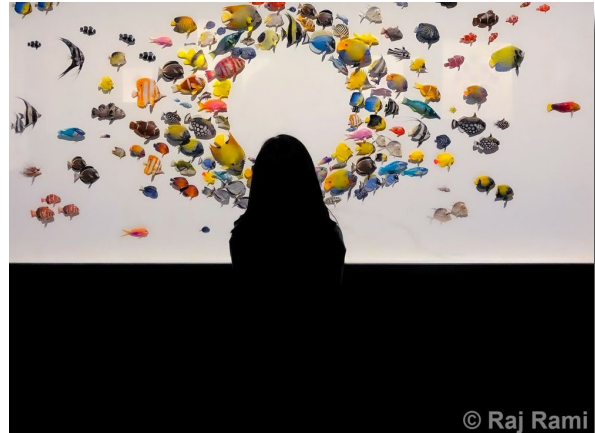
Challenge	Jerry Gowins
Competition	Hernando Convers, *Mark Gotchall (Co-chairs)
Critiquing	Terry Smith, *Jim Buch (Co-chairs)
Education	Jon Parker, **Dave Horton (Co-chairs)
Photo Forum	Rochelle Villanueva, *Kevin Reilly (Co-chairs)

\* Non-voting position \*\* Votes as Recent Past President

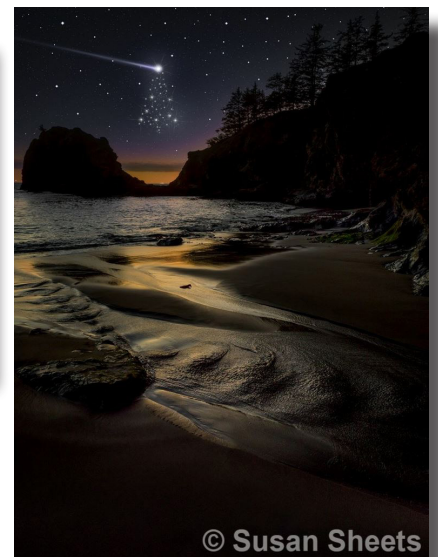




## 4Cs EID Competition Winners Altered Category

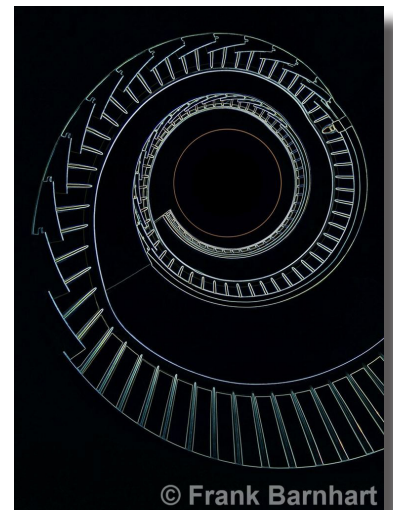
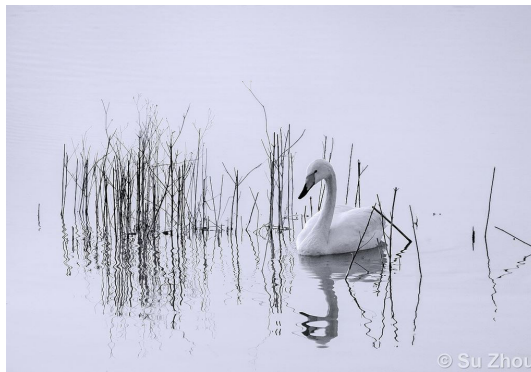
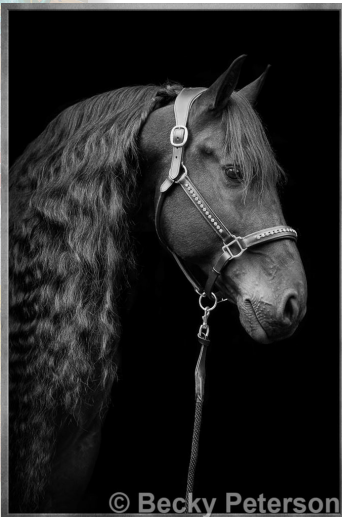


This is an individual quarterly competition open to any member of a Camera Club with Regional Columbia Council of Camera Clubs (4Cs) membership. Rules and deadline dates are on-line at 4Cs web site. Submissions are free.



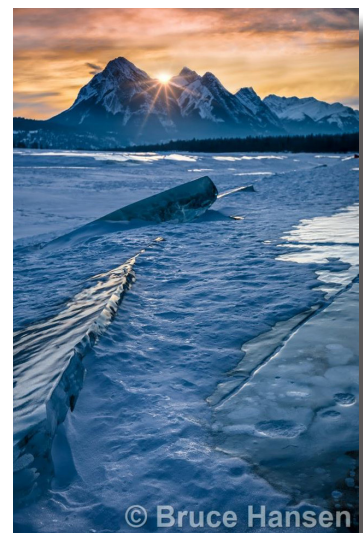
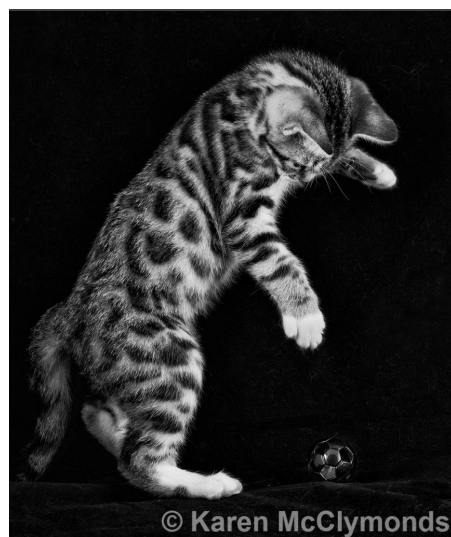


## 4Cs EID Competition Winners Monochrome Category





## 4Cs EID Competition Winners Traditional Category, Part 1





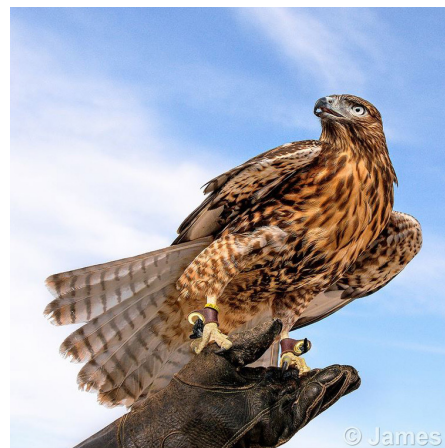
## 4Cs EID Competition Winners Traditional Category, Part 2



© Mary Lane Anderson



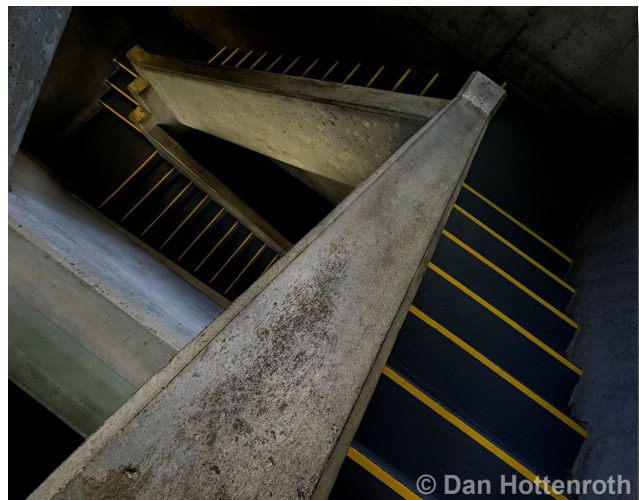
© Marjorie Kelley



© James



© Scott Shuey

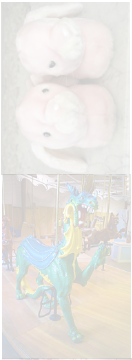


© Dan Hottenroth

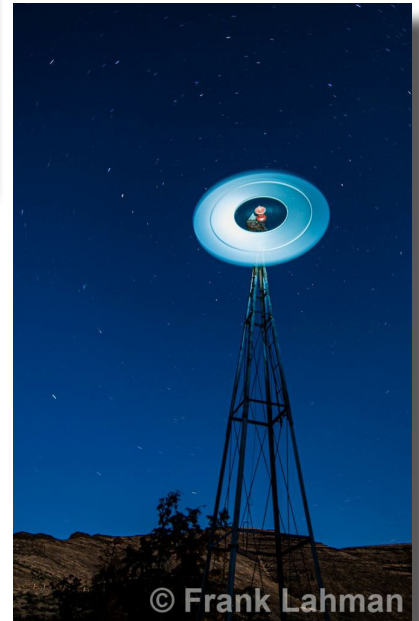




## 4Cs EID Competition Winners Traditional Category, Part 3



© John Craig



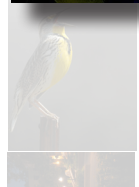
© Frank Lahman



© Tad Hetu



© Sharp Todd



© Clem Paslao



© John Preston





## A Tiny GoPro For Beetles: An Insect Camera Backpack

**I**n the movie “Ant-Man,” the title character can shrink in size and travel by soaring on the back of an insect. Now researchers at the University of Washington have developed a tiny wireless steerable camera that can also ride aboard an insect, giving everyone a chance to see an Ant-Man view of the world.

The camera streams video to a smartphone at 1 to 5 frames per second on a mechanical arm that can pivot 60 degrees. This system, which weighs about 250 milligrams -- one-tenth the weight of a playing card -- mounted on top of live beetles.

“We have created a low-power, low-weight, wireless camera system that can capture a first-person view of what’s happening from an actual live insect,” said senior author Shyam Gollakota, a UW associate professor in the Paul G. Allen School of Computer Science & Engineering. “Vision is so important for communication and for navigation, but it’s extremely challenging to do it at such a small scale.

Typical small cameras, such as those used in smartphones, use a lot of

power to capture high-resolution photos. The cameras are lightweight, but the batteries are too big and heavy.

The researchers used a tiny, ultra-low-power black-and-white camera that can sweep across a field of view with a mechanical arm. The arm moves when the team applies a high voltage, which makes the material bend and move the camera to position. The arm stays at that angle for about a minute before relaxing back to its original position.

The camera and arm are controlled via Bluetooth in a smartphone from a distance up to 120 meters away, about the distance of a football field.

“One advantage to being able to move the camera is that you can get a wide-angle view of what’s happening without consuming a huge amount of power,” said co-lead author Vikram Iyer.

The researchers attached their removable system to the backs of two different types of beetles. “We made sure the beetles could still move properly when they were carrying our system,” said co-lead author Ali

Najafi, a UW doctoral student in electrical engineering. “They were able to navigate freely across gravel, up a slope and climb trees.”

“We added a small accelerometer to detect when the beetle moves. Then the camera only captures images during that time,” Iyer said. With the accelerometer, we could record for six hours or more, depending on the beetle’s activity level.”

While the team is excited about the potential for lightweight and low-power mobile cameras, the researchers acknowledge that this technology comes with a new set of privacy risks.

“As researchers we strongly believe that it’s really important to put things in the public domain so people are aware of the risks and so people can start coming up with solutions to address them,” Gollakota said.

“This is the first time that we’ve had a first-person view from the back of a beetle while it’s walking around,” Iyer said.

*Science Daily, July 15, 2020  
University of Washington*



An EPS  
Preferred  
Vendor

### U of O Bookstore Art Department

Corner of 13th Ave. & Alder St.  
**20% discount on all art supplies**

An EPS  
Preferred  
Vendor

### The Oregon Gallery

199 East Fifth Avenue, Eugene

*(Almost adjacent to the Steehead Brewery)*

**15% discount on all matting and framing**



## What To Know

### September 2020

3 Challenge Night - Theme TBA June 4  
10 Ed. Night, TBA  
17 Digital Competition night  
24 Photo Forum Night, Q & A, Demos

### October 2020

1 Challenge Night - Theme TBA Sept. 3  
8 Ed. Night, TBA  
15 Digital Competition night  
22 Photo Forum Night, Q & A, Demos  
29 Board Meeting - 7 PM *All welcome*

### November 2020

5 Challenge Night - Theme TBA Oct. 1  
12 Ed. Night, TBA  
19 Digital Competition night  
26 Photo Forum Night, Q & A, Demos

### December 2020

3 Challenge Night - Theme TBA Nov. 5  
10 Ed. Night, TBA

*Only Two Meetings  
this month  
**HAPPY HOLIDAYS**  
to all EPSers*

#### - OPPORTUNITY -

The December 2020 issue of  
**THE BELLOWS**  
will be the last issue  
produced by the current editor.  
Beginning January 1, 2021  
this newsletter will be  
available FREE to a new owner  
to make an entirely new look  
with new ideas & creativity

## Where To Go

### • At the Courthouse

No more  
print shows  
at this location  
until further notice.

## Got a show? We want to know!

Have your photos  
been published?

- Magazines
- Brochures
- Calendars
- Journals

Send complete details to:  
<bittled70@gmail.com>

*"If you don't blow your own horn,  
somebody else will use it  
for a spittoon."*

Ambrose Bierce

## Classified

Classifieds Ads Free  
to all  
EPS members

This  
Space  
Available

**EPS WHOLESALE**  
print show supplies  
Best prices in town  
Available only to EPS

**\$17 FRAMES** (16"x 20" OD)  
Black or Brushed Silver Aluminum,  
Includes hardware & clean glass

**\$7 MATS** (Fit frames above)  
Double whites, 10"x15" or 12"x16" openings  
Whites / black core 10"x15" only  
Stiff backers included on all

**\$5 TRANSPORT BOXES**  
for carrying framed images  
(some assembly req.)

**\$2 goes to EPS** from each  
of the above purchases

Contact:  
Bruce Bittle 541.343.2386  
FREE Delivery to club meetings!

## Legal Stuff

**The Bellows** is published ten times per year by the *Emerald Photographic Society*, a not-for-profit organization, and is completely supported by EPS funds. All materials within do not necessarily reflect the views of the EPS Board of Directors, officers, membership, supporting vendors or editor of this publication. All brand and product names listed are trademarked and/or registered and are not necessarily endorsed by EPS. However, EPS

does endorse vendors, offering discounts to our members, listed on the last page (randomly as space allows on other pages) of each issue.

**The Bellows** policy is to always adequately attribute all images & posted content. **The Bellows** cannot be responsible for images or any other content acquired from unidentified web pages with no visible attribution or on-line contact information.

Reprinting articles from **The Bellows** for non-commercial use is permitted so long

as the photo or article is not copyrighted and source credit is given to EPS, the author and this newsletter. Any other reproduction requires specific written permission from the editor.

Inquiries about, or submissions for **The Bellows** (deadline is the last week of the month for following month publication) send to Editor, c/o Emerald Photographic Society, 1236 Debrick Rd., Eugene, OR 97401, or by email <bittled70@gmail.com>



## *EPS Preferred Vendors*

Show your membership card to these vendors for nice discounts.  
Be a good ambassador for EPS each time you receive these discounts  
by letting these folks know how much you appreciate their support.



### **Dotson's Camera Store**

1668 South Willamette Street

15% Discounts on in-house processing (including slide processing)

*Your camera's home  
away from home*

### **Focal Point Photography**

161 West Ellendale, Dallas, OR

Equipment Rentals, Trade Ins, discounts on most items Call Nate, 503.623.6300

### **Oregon Gallery**

199 East Fifth Avenue, Eugene

15% discount on all matting and framing

### **Red River Paper**

Professional quality papers of all types for much less than printer mfg. brands

10% rebate to EPS when ordered directly from our web site

### ***The Shutterbug* Camera Stores**

Two Stores 207 Coburg Rd. & Valley River Center

10% discount on photo accessories and photo finishing

### **TechMedic**

**Apple Mac Computer Technicians**

2125 W. 7th Ave (Big "Y" Center}

541•484•3603

*EPS Preferred Vendor*

### **U of O Bookstore Art Department (Basement)**

Corner of 13th Ave. & Alder St.

20% discount on all art supplies